

PETERBOROUGH & STAMFORD
**UNDERGRADUATE
PROSPECTUS**
2025-26



University Centre
Peterborough

HELLO FUTURE

WELCOME TO



Our mission at University Centre Peterborough is to engage, enable and empower students to meet the challenges of the future.

This guide should cover what you need to know before you apply, but it won't cover everything about university. We know that sometimes you would love to speak to a helpful member of the team.

Whether you want to know more about your accommodation, student finance, finding your way around, or you want to meet the lecturers and ask about your course, come to an Open Event or book a campus tour to get your questions answered!

Our website is packed with useful information, including interactive 360° tours of our amazing facilities. You can also visit our website to Live Chat with our friendly team or email us at enquiries@ucp.ac.uk.

UNIVERSITY CENTRE PETERBOROUGH

KEEP IN TOUCH



Follow our socials to keep up with everything going on at UCP.
Have a question for us? Give us a call on 01733 214466, send us an email to enquiries@ucp.ac.uk or visit our website to Live Chat with our friendly team.



Open Events

Our Open Events are a great way to get a snapshot of what university life is like here at UCP and provide you with all the information you need to help you make the right decision for your future.

On the day, you will be able to have a look around and speak to staff about applications and courses. We will have various displays and demonstrations for our courses and current students will also be on hand to tell you about studying with us.

In addition to our course advice, we will also have financial talks, and information on our clubs, societies and student accommodation.

Register your place at www.ucp.ac.uk.

Explore Our Campus Any Time!

Can't make it to an Open Event or missed something you wanted to see? Contact us to book a tour any time Monday to Friday, or check out our virtual tour at any time on our website.



Open Events 2024/25

24
OCT
2024

19
NOV
2024

15
MAR
2025

CONTENTS

INFORMATION

Welcome to UCP	2
Keep in Touch	4
Your Future Starts Here	8
We Are Inspire Education Group	10
Say Hello to a Brighter Future	12
Where Being Smaller Really Counts	14
We Get To Know You as Individuals	16
Timetables That Fit Around You	18
We Are Here to Support You	20
Mature Students Are Not Alone	22
We Believe in Giving Our Students a Voice	24
Your Campus and Student Activities	26
Student Housing and Flats	28
Getting Here is Easy	30
Discover Our Vibrant Region	32
Our Students' Success	34
UCP Partners	88
How to Apply	90
Entry Requirements	92
Fees and Funding	94
Keep in Touch	98

COURSES

Business and Marketing Courses	38
Foundation Degree in Business Management	40
BSc (Hons) Business Management	40
BSc (Hons) Business Management (Human Resources Management)	40
BSc (Hons) Business Management (Marketing)	40
BSc (Hons) Business Management (Management Accounting)	41

Foundation Degree in Digital Marketing and Communications	41
BA (Hons) Digital Marketing and Communications	41

Computing and Technology Courses.....42

BSc (Hons) Computer Science	44
BSc (Hons) Computer Science (Cyber Security)	44
BSc (Hons) Computer Science (Networking)	44
BSc (Hons) Computer Science (Software Development)	44
Diploma in Web Application Development	45
Foundation Degree in Computer Science	45
HTQ Digital Technologies for England (Cloud Networking)	46
HTQ Digital Technologies for England (Cyber Security)	46
HTQ Digital Technologies for England (Data Analytics)	46
HTQ Digital Technologies for England (Software Development and Programming)	46

Creative Industries Courses.....48

BA (Hons) Acting for Stage and Screen	50
BA (Hons) Digital Arts	50
BA (Hons) Digital Arts (Graphic Design)	50
BA (Hons) Digital Arts (Photography)	50
BA (Hons) English Literature	50
BA (Hons) English Literature (Creative Writing)	51
BA (Hons) Journalism	51
BA (Hons) Media Production	51
HNC/HND Performing Arts (Musical Theatre)	51

Education and Teaching Courses.....52

Foundation Degree in Early Childhood Studies	54
Foundation Degree in Primary Education	54
BA (Hons) Early Childhood Studies (Top-Up)	54
BA (Hons) Education Studies (Top-Up)	55
BA (Hons) Primary Education (Top-Up)	55
Certificate/Professional Graduate Diploma in Education (Teaching Post-16 and Further Education)	55

Engineering Courses.....56

HNC in Engineering (Electrical and Electronic)	58
HNC in Engineering (Mechanical)	58
HND in Engineering (General)	58
HTQ HND in Electrical and Electronic Engineering for England	59
HTQ HND in Mechanical Engineering for England	59
BEng (Hons) Engineering (Electrical/Mechanical) (Top-Up)	59

Science Courses.....60

HND in Animal Conservation and Countryside Management	62
HND in Animal Management (Animal Behaviour and Welfare)	62
BSc (Hons) Animal Management and Welfare (Top-Up)	62
Foundation Degree in Forensic Investigation	62
BSc (Hons) Forensic Investigation	63

Social Sciences and Humanities Courses.....64

BA (Hons) Criminology	66
BA (Hons) History and Archaeology	66
BA (Hons) Psychosocial Studies	66
BA (Hons) Sociology	66
DipHE Therapeutic Counselling (CBT / Person-Centred)	66
BA (Hons) Therapeutic Counselling and Psychotherapy (Top-Up)	67
DipHE Adult Care Leadership and Management	67

Sport Courses.....68

Foundation Degree in Sport and Exercise Science (Coaching)	70
BSc (Hons) Sport and Exercise Science (Coaching)	70
BSc (Hons) Sport and Exercise Science	70
HTQ Community Coaching for England	70

Higher Technical Qualification Courses.....72

Access to Higher Education Courses.....76

Access to Higher Education (Business)	78
Access to Higher Education (Humanities and Social Sciences)	78
Access to Higher Education (Science)	78
Pre-Access Certificate in Skills for Employment, Training and Personal Development	78

Accounting and Professional Courses.....80

Professional Accounting or Taxation Technician Apprenticeship Standard Level 4	82
Operations or Departmental Manager Apprenticeship Standard Level 5	82
Chartered Legal Executive Apprenticeship Standard Level 6	82
Accountancy or Taxation Professional Apprenticeship Standard Level 7	82
Professional Diploma in Accounting AAT Level 4	82
CPQ Advanced CILEX Level 5	83
Diploma in Management and Leadership CMI Level 5	83

Modular / Micro Credentials.....84

DipHE Adult Care Leadership and Management	87
DipHE Therapeutic Counselling (CBT / Person-Centred)	87

YOUR FUTURE

While you are studying with us, we aim to support your development and assist you in achieving your career ambitions. We care about you as individuals and one of our key objectives is to ensure we listen to your views and continuously develop our provision so that your career needs are met. This is apparent from our many achievements which include the award of TEF Silver in 2023 and in 2022/2023, 81% of our graduates achieved a 2:1 or above.

We support you for 18 months post-graduation to ensure you can access the career of your dreams or continue into Masters study. For those in employment, we offer degrees on a part-time or blended delivery model. This means that some modules may be delivered online and related to your employment. We are also introducing modular study so you can refresh your knowledge and improve your CV. Our Counselling Diploma and Management and Leadership in Adult Social Care can both be studied on a modular basis. Keep looking at our website as we develop our offer. The Lifelong Learning Entitlement is being introduced in January 2026 so this will aid in funding modular study.

In addition, we launched our Higher Technical Qualification offer in 2024. These have been developed by employers and on completion you can top-up with a degree. Building on our professional portfolio Anglia Professional Training (APT) have joined us at our Peterborough campus so there are even more qualifications available in Accounting (AAT), business and HR.

For those moving to Peterborough, we have a robust student support network, covering academic and extracurricular activities. With numerous societies and activities, we ensure that University Centre Peterborough is a hub of activity and opportunity. We also have a great network to support our mature learners and ensure our 2 day a week timetables, subsidised travel and bursaries make HE study accessible for everyone.

Our Student Ambassadors provide a friendly face from day one and will advise and guide you about course-related and extracurricular activities. We have an active Student Council and Student Officer who ensures that we work in partnership to provide a learning experience that meets the needs of our diverse and rich community.

Enhancing democratic and civic participation also builds the confidence of our students, creates networks, and enhances your employability. A number of research projects undertaken by our staff and students have led to knowledge exchange which promotes public good which, in turn, promotes great democratic and civic participation. UCP is committed to meeting the needs of its local community. We are active members of the Peterborough Cultural Alliance, Peterborough Citizens, Islah and work closely with the RSPCA.

We look forward to seeing you at University Centre Peterborough.

Liz Knight
Academic Director
University Centre
Peterborough



Since opening our purpose-built £10 million campus in the heart of Peterborough, we have grown to offer a broad portfolio of courses covering a range of subjects. We are rapidly developing specialisms in a number of key areas to reflect the needs of students and local, national, and international employers. This has led to genuine employment opportunities for our graduates in their chosen career path as well as opportunities to build academic skills necessary for postgraduate study.

We pride ourselves on creating a learning environment which is different from other universities, and our strength comes from our smaller size, which enables us to put you at the heart of everything we do. When you study with us, we will support your development and help you in achieving your career and personal ambitions.

In 2020, we became part of the Inspire Education Group and are proud to be validated by The Open University for higher education programmes at both our Peterborough and Stamford campuses.

Higher National provision accredited by Pearson is delivered at both campuses. UCP also has a range of teaching and education courses accredited by Bishop Grosseteste University. We also offer Performing Arts courses at our partner provider, the Eastern School of Performing Arts (ESPA), who are based in Stamford.

We have forged excellent working relationships with companies such as Anglian Water, Caterpillar, schools across the region as well as numerous third sector organisations such as the Citizens' Advice Bureau and Arts Council. Such companies directly recruit from us, offering paid internships and commissioned projects. We also have excellent connections with volunteer organisations to support your personal development from year one.



Teaching
Excellence
Framework

STARTS HERE

WE ARE INSPIRE EDUCATION GROUP



**The IEG mission is
to transform lives
through inspirational
education and training.**

Peterborough and Stamford, Thriving Together

Inspire Education Group (IEG) is a successful provider of further and higher education, combining Peterborough College, Stamford College and University Centre Peterborough.

We seek to transform the lives of our students and trainees, preparing each for their next step, whatever that might be. We support employers to develop their people and their organisations. We strive to make a positive contribution to the prosperity and wellbeing of our diverse communities.

We will continue to create and nurture long-term, strategic partnerships that support us in responding to the needs of our different communities, contributing to the social and economic prosperity, growth and aspiration of our locales, and building the resilience of our group.

People are at the heart of our group, whether that is our students and trainees, our partners in industry and local services, or our staff who deliver outstanding education and training and shape our culture, ethos and values. If you are already part of our IEG family, you may be able to receive special benefits and opportunities for progressing to UCP.

The group meets challenges and opportunities with ambition, energy, optimism, and an absolute focus on excellence.



**Inspire
Education Group**



**Peterborough
College**



**Stamford
College**



**University Centre
Peterborough**

SAY HELLO TO A BRIGHTER FUTURE

Getting a degree is the start of your journey, not the end.
We will help you progress within your chosen career.



A Fast Growing City

Peterborough is one of the fastest growing cities in the UK, particularly due to excellent road and rail links. There is a thriving hub of businesses which includes head offices for some of the UK's top companies. With this growth, there is demand from companies for graduates, which gives University Centre Peterborough graduates a head start in gaining employment in their chosen career.

Best Place to Live in the UK

Our Stamford campus is located in the heart of the town where you can benefit from a wealth of eclectic cafés, restaurants, pubs and bars. Stamford streams with culture and it's only a short drive from Peterborough and other large cities such as Leicester and Nottingham.

Hello Future

Our courses have been designed in consultation with local employers to ensure our graduates are career-ready as we realise how important new graduates are for local employers. Visit our website to explore the different careers and jobs available for graduates to help you choose which course is most suitable for you.

Improving Employability

We have an Employability Hub to enhance your professional and transferable skills. We work with students and employers to develop graduate outcomes and maximise the employability of our students. There are numerous employability and volunteering opportunities each year, supported by local and national employers. We are here to help you into work or further study for 18 months after you graduate.

Work Placements and Work Experience

Employability plays an important part in the course that you study, and we will help you identify work placements, internships and volunteering opportunities. As our lecturers have links with industry, they can let you know about the opportunities available, even after you have finished studying with us and become part of our Alumni.

Some courses include work placements as core modules which are assessed and may lead to employment after you graduate. As courses are timetabled as full days during the week when studied full-time, this gives you the flexibility to find part-time work or a work placement, internship or volunteering opportunity.

WHERE BEING SMALLER



We believe that **size really matters** when it comes to choosing a university, as there are many benefits to studying somewhere smaller.

Benefit from our Small Class Sizes

The courses at University Centre Peterborough are studied in small class sizes compared with other universities; a typical class size is under 20 students.

During our lectures and seminars, students can engage and interact with academic staff, so all students understand the course content and build knowledge. There are opportunities to discuss and answer questions without any pressure. Compared to larger universities which may have lectures with over 100 students, the learning environment can be very different.

There are some courses where smaller classes are even more beneficial, as you may need to be hands-on with recording equipment, require individual help in the science lab, use specialist technology to test sports performance or star in a drama production.

You Will Get Noticed

All students have an equal chance to stand out from the crowd and have their potential noticed. As our lecturing staff get to know you, they will let you know of work placement and employment opportunities that are most suitable for you.

It's Easy to Settle in

You won't get nervous finding your way around campus and you certainly won't get lost finding where your next seminar is. Our modern campus makes it easy to settle in and we ensure new students see all of the facilities during their induction and enrolment week. If you want to see the campus beforehand, book a personalised tour or come to one of our Open Events.

Make New Friends Straight Away

In small classes, you will quickly get to know your peers and group activities will give you opportunities to work together. As our courses are based on small campuses, you will also get to know students on other courses.

Access to Support When You Need it

By the nature of us being a smaller institution, you can be reassured that our support team and your lecturers can give you the support you require. Our inclusive environment means that we use teaching, learning and assessment methods that suit all learners. You will find it helpful that you are dealing with familiar staff throughout the duration of your studies, and they will take the time to get to know you and understand your needs.

REALLY COUNTS

WE GET TO KNOW YOU

We provide a warm and welcoming environment, where all of the academics, support staff and senior management get to know you as individuals.



Your Future Really Matters to Us

Our academic staff will know your name, what you are interested in, how well you are doing, whether you need extra support and what your future plans are so they can help you succeed. This support continues after you have graduated as we will continue to support you as a member of our Alumni.

One-to-One and Group Tutorials

We timetable weekly individual and group tutorials so you can discuss previous lectures and seminars, plan for coursework and assessments and talk through any help you require to get the most out of your course. This also gives you the opportunity to receive feedback on coursework and assessments so you are constantly able to improve.

Small class sizes also mean that in the event you are unable to attend a lecture, we will ensure you are not missing out on important course content.

Learn from Quality, Experienced and Well-Connected Staff

Many of our lecturing staff have worked in the industry they teach in and bring their knowledge and understanding of best practice to lectures and seminars. Through their industry connections, they will help you gain work placements or opportunities in local and national businesses.

We are committed to the personal and professional development of our academic staff, so you are taught by leading academics with recognised qualifications.

AS INDIVIDUALS

TIMETABLES THAT FIT AROUND YOU



Your time is very valuable, which is why we help you make the most of it, so you can fit your course around personal or work commitments.

The Majority of Our Courses Are Two Days per Week

When studied full-time, the majority of courses at University Centre Peterborough have lectures timetabled as two full days a week over two semesters per year. Part-time courses have one to two full days a week over two semesters per year. The days of the week you study may change each year.

We are able to offer this convenient timetabling to our students as we are a smaller institution. There are some exceptions where full-time courses are one or up to three days a week, and you can find the specific details on our website.

Planning Your Other Days of the Week

This convenient timetabling enables you to better plan your time for independent study and fit the course around personal or work commitments. It can help you to gain part-time work to fund your time at university, or work placements and volunteering opportunities to enhance your employability after you graduate.

The Academic Year

There are two semesters per year and each semester is up to 15 weeks, which includes up to 12 teaching weeks and 3 assessment weeks.

If studying full-time, you will be in classes, seminars and tutorials for approximately 15 hours per week and you will spend the rest of your time in independent study and extra-curricular activities, including work placement if not embedded in your course. We recommend that full-time students allow 30 hours per week for additional study.

The campus is open Monday to Friday throughout the year and you will also have 24/7 access to a Virtual Learning Environment (VLE) with e-books, journals and abstracts, plus teaching resources and interactive tools.

Timetables are available at least 6 weeks before enrolment and you can refer to the academic calendar at www.ucp.ac.uk for examination weeks and resit periods.

WE ARE HERE TO SUPPORT YOU

You might not need any support during your time studying with us, but if you do need to speak to someone, it is reassuring to know there is someone available and willing to help.



Student Support

Our Student Support team are not just there to help our current students, but can help you even before you apply to us, as we understand that preparation is just as important.

If you have something you don't feel comfortable speaking to a member of staff about, you can speak to our Student Officer who is there to bridge the gap between students and staff. The Student Support team can help deal with all enquiries relating to:

- Funding and fees for UK and EU students
- Grants and allowances
- Student accommodation
- Mental health and wellbeing
- Emotional support
- Course extensions and mitigations
- Arrangements for learning support

Study Excellence Sessions

During lunchtimes, there are drop-in Study Excellence sessions which focus on academic, transferable and professional skills such as Harvard referencing, preparing for seminars, and IT help using Excel and PowerPoint. We also offer English writing and speaking support sessions for students where English is an additional language (EAL).

Employability Hub

Our Employability Hub is designed to enhance your professional and transferable skills, plus we will help students with employability and placement opportunities as we work closely with employers.

Disabled Students

Our facilities are designed to be fully accessible for disabled students. We provide additional support by purchasing specialist equipment, staffing help or extra time for exams. We will require you to undertake an assessment so we can tailor support to your needs.

Chaplaincy

A chaplaincy service is available to you irrespective of your faith or commitment. Here you can discuss spiritual or personal issues in confidence. They host weekly free coffee mornings where you are welcome to have a friendly chat.

“I took advantage of the free Study Excellence sessions in my first year, which helped me quickly adapt to studying at degree level.”

MATURE STUDENTS



ARE NOT ALONE

The student community at University Centre Peterborough is **diverse and friendly**.

Starting University as a Mature Student

You will not feel alone as all courses have a mix of different ages, with at least one in three undergraduates being a mature student, so you get the chance to meet people with similar interests and experiences. You will find that you bring interesting and alternative perspectives into lectures, and these will be respected and valued. We are committed to helping you develop your academic skills so you can balance your studies with family or work commitments.

Funding Your Studies

Mature students are just as entitled to apply for tuition fee and maintenance fee loans and you may be entitled to bursary schemes. In certain circumstances, you may be able to get additional loans / grants to help towards your living costs or childcare. We will help you on an individual basis to ensure you receive what you are entitled to. See page 94 for further information.

Part-Time Study

Many of our courses offer the option to study part-time so you can fit studies around family or work commitments. However, due to the way we timetable lectures for the majority of courses into two full days, you may find that studying full-time is just as convenient. A part-time degree typically takes 4 years to complete with us, as opposed to 6 years at other universities. Note that applications for part-time courses can be made directly to University Centre Peterborough.

Access to HE

If you have been out of education for a while and do not want to start a degree straight away, you might want to consider an Access to Higher Education qualification, which can prepare you for university study. Mature students who study Access to HE beforehand can be better prepared to manage the workload of a degree (see page 76 for further information). A Foundation/Year 0 course at a university would typically cost £9250, whereas an Access to HE course would cost just £3000. What's more, if you pay using an Advanced Learner Loan, you may not have to pay it back if you go on to complete a degree.

Childcare Facilities

There is a nursery on our Peterborough campus, which offers high quality childcare for babies and young children aged 3 months to 5 years old. Early booking is advised as there are limited spaces. For more information, please contact Parcs Nursery on 01733 762180 or email nursery.pbo@ieg.ac.uk. We can also advise on grants/childcare placement funding and eligibility. Please talk to our Student Support team.



WE BELIEVE IN GIVING OUR STUDENTS A VOICE

We listen to what you have to say and act on your feedback and comments. Our students play an important role in the success of University Centre Peterborough.



Student Council

Instead of a Students' Union, University Centre Peterborough has its own Student Council. This is managed by our Student Officer and is completely independent from UCP, so can act impartially on behalf of the students. The Student Council meet once a month and topics vary from teaching, facilities and general feelings about student life.

This provides an opportunity for engagement and participation, where the student voice can be heard and actively promoted.

Student Reps

University Centre Peterborough has many Student Representatives who sit on academic committees and who provide feedback on behalf of other students on their course.

Student Charter

The Student Charter was produced with our students and worded to be 'student friendly'. It outlines the rules and regulations as well as the rights students have with us. Quality and standards are covered within the Student Charter, which outlines what students can expect from UCP and what UCP expects of its students. The Student Charter has enabled students to participate at a high level, not only because students wrote it, but it is also a policy that is owned and updated by our students.

Student Ambassadors

If you are an undergraduate student, you could receive a tax-free bursary of up to £1,000 by becoming a Student Ambassador for University Centre Peterborough. Our Ambassadors provide a link between the University Centre and prospective students.

The benefits of becoming an Ambassador include; increased employability when you graduate, developing personal and presentation skills and inspiring prospective students to go to university.

Student Officer

Our Student Officer chairs the Student Council, is a member of the UCP Council (our governing body) and is involved with UCP meetings. As a board member, the Student Officer provides a voice for the student body and can influence decisions that are made.

University Centre Peterborough takes the student voice very seriously and encourages a partnership ethos between institution and student. The role of the Student Officer is to act as a link and mediator between students and staff.

YOUR CAMPUS

AND STUDENT ACTIVITIES

Our campuses are located in the heart of Peterborough and Stamford, and just a short walk into the city and town centres.



Study at our Modern Campuses

For the majority of our undergraduate courses, all lectures and seminars will take place at the Peterborough or Stamford campuses, which are open Monday to Friday throughout the year.

Our modern campuses include the following features:

- 96 seater lecture theatre*
- Fully-equipped classrooms
- Café
- Large social atrium or common room
- Computer / digital suites
- Quiet study zones
- Open plan / group study areas
- Student Support Centre
- eSports facility
- Immersive teaching rooms
- Meeting pods

Students will have access to the library, gym, beauty salon, nursery* and additional catering outlets at the adjoining Peterborough and Stamford Colleges.

Some courses at our Peterborough campus have practical elements so will use the specialist facilities such as gym and sports labs, science laboratories and engineering / construction areas at adjoining Peterborough College. Our Media Production and Journalism courses use specialist facilities at the Media and Journalism Centre in Peterborough City Centre and our Performing Arts courses use the rehearsal facilities at The Key Theatre or our various partners.

*Located at the Peterborough campus only.

Student Events

Each semester there is plenty to do, with lots of events that are available for all students. This is where you can socialise and get to know fellow students on other courses.

Just some of our student events include:

- Freshers' Welcome Week
- Quiz nights
- Film screenings
- Charity and fundraising events
- Family fun activities
- Employability events
- Volunteering events
- Student Awards evening
- Graduation ceremony

We also work with many venues and attractions across Peterborough and Stamford to arrange special events for courses and social groups.

Clubs, Societies and Teams

There are a variety of sports teams, clubs and societies on offer at University Centre Peterborough; they meet to take part in activities throughout the year, such as the Creative Writing Society, Crime and Justice Society and 'Inside the Box', our award-winning student editorial team. In 2024 we launched our eSports team.

If there is not a club or sports team for you, then you can start your own! You just need a minimum of 10 students and we will support you by providing funding.



STUDENT HOUSING

For many, university life starts in student accommodation. It is convenient, cost effective and a great way to meet and make new friends.



AND FLATS

Student Housing

The halls at University Court in Peterborough are located within walking distance of our Park Crescent campus and close to the city centre. The train station in the city centre also makes it convenient for our courses in Stamford.

The accommodation is available to all students and is allocated on a first come first serve basis. University Centre Peterborough may also refer students to other private providers.

- Five bedrooms in each flat
- En-suite in every bedroom
- Free Wi-Fi
- Free laundry facilities
- 24 hour CCTV and gated entrance
- Secure cycle store
- Car parking available
- Single sex flats available

Each five bedroom flat has a communal kitchen / lounge with sofas and is fully equipped with breakfast bar, range of kitchen units and appliances (including cooker, fridge, freezer and microwave) making it a great space for relaxing with your housemates.

All of the private bedrooms include a double bed and study area with desk, storage and shelving. Every bedroom has its own private en-suite shower room so you do not have to share bathrooms. There is also a common room and laundry room serving the entire complex.

Safe and Secure

The accommodation offers a safe environment for students to enjoy university life. Access to the accommodation is via an electronic gate which leads into well-lit, secure landscaped grounds with CCTV and 24 hour emergency call-out. A secure cycle store is provided and limited car parking is available.

Costs and Virtual Tours

Rooms can be rented for £560 per month for a standard room, or £585 per month for a premium room (price correct for 2024/25) which is fully inclusive of utility bills and Wi-Fi. Each tenancy will be subject to a £300 deposit, payable on commencement of lease. Allocated parking at the property is an additional cost of £35 per month.

University Court is managed independently from University Centre Peterborough - for further information including a virtual tour please visit: www.tavernershall.co.uk.

Other Student Accommodation

University Centre Peterborough can help with arrangements and queries regarding accommodation at University Court or other private rented accommodation in Peterborough. For further information or queries please email accommodation@ucp.ac.uk.

GETTING HERE

Peterborough and Stamford are located in the heart of the UK and benefit from excellent road and rail links.

Commuting to UCP

Whilst many new students move into our student accommodation in Peterborough, a third of the students who study at University Centre Peterborough commute from up to 40 miles away. As the majority of courses are timetabled as two full days a week, it can be just as easy to commute from home.

Walking

Our campuses are close to the city and town centres and a short walk from the main bus and train stations.

Car

If you plan to bring your car, you can apply for a free car parking permit if you live more than two miles away and park for free on-site. Spaces are limited and available on a first come, first served basis. When using a satnav to the Peterborough campus, use postcode PE1 4DX (not PE1 4DZ) which will bring you to the Park Crescent entrance.

Cycling

Our central locations in the heart of Peterborough and Stamford mean that students can use the network of cycle routes, providing a quick, safe and easy way to get around. There are also plenty of cycle racks available on campus.

Bus

The bus stations in Peterborough and Stamford are a short walk to our main campuses. For buses which stop directly at our campuses, students can use the Peterborough College or Stamford College bus routes for a subsidised cost per year. These pick up from many of the towns and villages within a 20 mile radius. For the full list and pick up / drop off times, please visit: www.peterborough.ac.uk or www.stamford.ac.uk.

Train

Peterborough is a major interchange train station and has direct links from the north and south, with London from 45 minutes and Newcastle from 2 hours 20 minutes away. Peterborough to Stamford by train is under 15 minutes and trains depart at least every hour.

Under 1 hour to Peterborough by train from....

Whittlesey	10 mins
Stamford	15 mins
Huntingdon	15 mins
Grantham	20 mins
March	20 mins
St Neots	25 mins
Spalding	25 mins
Stevenage	30 mins
Newark	30 mins
Oakham	30 mins
Sandy	30 mins
Ely	35 mins
London (Kings Cross)	45 mins
Cambridge	55 mins
Leicester	55 mins
Doncaster	55 mins



IS EASY

DISCOVER OUR

The diverse and picturesque areas of Peterborough and Stamford have plenty to do and see for students of all ages and interests. Check out our guide to what's on!



VIBRANT REGION

Exploring Stamford and Peterborough

Use this guide to help you explore just some of what our diverse and picturesque areas offer. If you have not been to Peterborough or Stamford before, we hope this helps you find something to do and enjoy. For the latest information on events, attractions and news of what is going on in the local area, check out:

www.peterboroughmatters.co.uk
www.espmag.co.uk
www.themomentmagazine.com
www.welovepeterborough.co.uk

History and Heritage

Peterborough is steeped in heritage, from the 900 year old Peterborough Cathedral, to Bronze Age settlements at Flag Fen. Burghley House near Stamford hosts many annual events and Peterborough Museum has over 200,000 items.

Culture and Entertainment

Stand-up comedy, live theatre, musicals, dance, West End screenings, pantomime, tribute bands, live music and club nights - we've got pretty much everything covered. Top acts and national tours choose the big venues in Peterborough and Stamford as their preferred destination. For upcoming dates, check out:

www.keytheatre.org.uk
www.stamfordcornexchange.co.uk
www.cresset.co.uk
www.newtheatre-peterborough.com
www.tolethorpe.co.uk

Festivals

There are festivals taking place throughout the year that celebrate everything from heritage, religion, nationality, beer and even sausages! Check out:

www.fakefestivals.co.uk
www.pborobeerfest.camra.org.uk
www.peterboroughdiwali.org
www.peterboroughmuseum.org.uk
www.simfestival.com

Shopping

As well as the main shopping centres, you will be spoilt for choice with even more shopping outlets and markets. There are high street chains including Primark, M&S, River Island, Next and H&M, plus plenty of boutique and artisan shops.

Student Activities

Stuck for something different to do? There is always plenty of choice, plus special offers and discounts for students. Try:

www.showcasecinemas.co.uk
www.hollywoodbowl.co.uk/peterborough
www.inflatation.com
www.escape-peterborough.co.uk

Food and Drink

If you're a real foodie, then Peterborough and Stamford are the perfect places to set your taste buds alive! Stretching to all corners of the globe, there is an array of exotic cuisines, as well as high street chains. Check out:

www.charters-bar.com
www.tapandtdoor.co.uk
www.thebrewery-tap.com
www.kneadpubs.co.uk/paten-co
www.cosyclub.co.uk/location/stamford
www.blondebeet.co.uk

Sport - Watch or Join in!

Peterborough is home to Peterborough United FC, also known as 'The Posh'. For a great student night out we recommend you visit the ice hockey for fast and thrilling sports that are competing at the top level. Whatever sport you want to do, there will be the facilities or a club to do it. There are plenty of gyms and swimming pools plus sports clubs for rowing, tennis, squash, martial arts, hockey, cricket, rugby and football.

Green Spaces

You are never far away from outdoor spaces with Nene Park, Ferry Meadows or Burghley Park offering stunning lakes, meadows and woodland. Our Peterborough campus is next to Central Park which is one of the most prestigious parks in the city. The Green Wheel is a 45 mile long cycle route circling Peterborough and offering a healthy way to enjoy the picturesque countryside.

www.nenepark.org.uk/ferry-meadows

45 Minutes to London!

Whilst Peterborough and Stamford have everything on offer you will need, the rest of the UK is easily accessible and you can get to Kings Cross London by train from Peterborough in just 45 minutes.

OUR STUDENTS'



Enhancing Your Experience

We are privileged to hold our graduation ceremony in Peterborough Cathedral and immensely proud that 81% of our graduates achieve a first class honours or 2:1 degree classification. After graduating, it is rewarding to see the careers our students go on to as well as students who choose to continue their academic journey by studying a variety of postgraduate courses.

Past students have gone on to study masters in engineering at Oxford and PGCE qualifications to pursue their teaching careers in local schools.

Our Journalism students have secured roles with BBC Cambridgeshire thanks to events organised by the BBC and UCP who are working closely together on exciting projects for the Peterborough area.

Students have the opportunity to join 'Inside the Box', our award-winning student editorial team.

Our employers are a key part in university life and are involved in the conferences for Computing, Engineering and Sport, which showcase the ground-breaking work from our final year students.

Our Early Years and Education students in Peterborough and Stamford continue to play a valuable role as key workers in schools which are rapidly growing in the area.

To promote literature in the region, we run a series of popular Literary Festival events which are free for members of the public to attend. Previous speakers have included popular children's author Michael Rosen and crime writer Sophie Hannah.

Our English Literature students produced an anthology of student work, which was designed and typeset by the students and published by the award winning East Anglian publishing house, Gatehouse Press. The anthology, '*The Other Side*', features short stories and poems, including those from the former Peterborough Poet Laureate, and University Centre Peterborough graduate, Kat Beeton.

At our annual Student Awards ceremony we recognise the hard work and excellence across every single one of our courses and those individuals who have made significant contributions to the student community.

There are many other opportunities for you to use and see the facilities as we encourage the wider community to be involved. We host many subject taster events for sixth form and college students and have offered exciting crime scene experiences.

Every year, University Centre Peterborough continues to grow and our Alumni have created an institution that celebrates success, personal achievements and contribution building a culture for others to benefit from.

As we approach our 15th birthday, University Centre Peterborough have been accredited with TEF Silver Status (Teaching Excellence Framework). A testament to the high-quality teaching and student experience offered by the city's longest-standing higher education provider.



SUCCESS

HND **Animal Management** (Animal Behaviour and Welfare) graduate of University Centre Peterborough, Rebecca Windall, has advanced to the position of Animal Care Assistant at RSPCA Newbrook Farm: Animal Centre, Hospital, and Education Centre.



Kirstie Marfleet, BA (Hons) **English Literature with Creative Writing** student of University Centre Peterborough, has been crowned as the University's first-ever undergraduate recipient of the Malcolm Bradbury Trust Scholarship. The scholarship supported Kirstie to undertake a work placement at ITV!



In March 2024, UCP held a vibrant two-day Creative Showcase at the Key Theatre, captivating audiences with a diverse range of artistic expressions. The event offered a platform for talented students to showcase their work.

Visitors to the **Digital Arts** exhibit were treated to a dazzling display of cutting-edge technology and imaginative creations. Stunning 3D and interactive installations explored diverse themes, captivating audiences with their originality and depth. These thought-provoking works, crafted by UCP's final-year students, ranged from examinations of propaganda's influence to artistic interpretations of gender identity.

UCP's **Media and Journalism** students showcased their storytelling skills and filmmaking talents with documentaries that captured real-life experiences to imaginative creative shorts. The showcase immersed viewers in captivating stories.

Aspiring poets had their moment to shine at the Open Mic Poetry Night. The event offered a platform for established and emerging voices to share their work whilst families delighted in the spirit of adventure at "Ken Ludwig's Sherwood: The Adventures of Robin Hood." UCP's talented **Acting for Stage and Screen** students brought this classic tale to life with a heart-pounding and laughter-filled production.



Final year **Creative Writing** students also embarked on a ground-breaking project which saw them create and publish a high-quality anthology of writing alongside local authors across Peterborough.

In a remarkable story of career transformation, Molly, a dedicated teacher for over 20 years and a mother to three children has successfully transitioned to a fulfilling career in counselling at the age of 40. Molly has now attained her Level 5 Diploma in **Therapeutic Counselling**.

Amy Drake, **Forensic Investigation** graduate secured a role as a Volume Crime Scene Examiner with Cambridgeshire Constabulary. In her new role, Amy will be expected to attend crime scenes to analyse and establish how a crime has occurred. Recovering a range of evidence, including friction ridge detail, DNA material and footwear marks, Amy will call upon the knowledge and experience gained during her studies at University Centre Peterborough.



Follow us to keep up with what's going on!



OUR COURSE LIST



BUSINESS AND MARKETING.....	38
COMPUTING AND TECHNOLOGY.....	42
CREATIVE INDUSTRIES.....	48
EDUCATION AND TEACHING.....	52
ENGINEERING.....	56
SCIENCE.....	60
SOCIAL SCIENCES AND HUMANITIES	64
SPORT.....	68
HIGHER TECHNICAL QUALIFICATIONS....	72
ACCESS TO HIGHER EDUCATION.....	76
ACCOUNTING AND PROFESSIONAL COURSES.....	80
MODULAR / MICRO CREDENTIALS.....	84

Visit our website for the most up-to-date information and full details about each course.

BUSINESS

AND MARKETING

University Centre Peterborough's Business and Marketing degrees and foundation degrees, providing students with professional qualifications such as CIM (Chartered Institute of Marketing) and CMI (Chartered Management Institute), empowering them with the knowledge and skills necessary to excel in the industry.



"It's somewhere you can study and put your head down. They also have fewer numbers in the classroom, so you have more 1:1 time with the teacher!"

Hassan Hamid graduated with a Business Management degree at UCP and is now pursuing a Master's in International Banking and Finance at the University of Leicester. He highlighted the personalised education style as a standout feature at UCP.

Foundation Degree in Business Management

Entry requirements 48 UCAS Points and 5 GCSE grades C/4 or above including English and Maths.

Duration Full-time: 2 years (2 full days a week over two semesters per year).

S UCAS CODE
N280
TUITION P/A
£8,250 F-T
VALIDATED BY
THE OPEN
UNIVERSITY



BSc (Hons) Business Management

Entry requirements 72 UCAS Points from a related subject and 5 GCSE grades C/4 or above including English and Maths. If you have completed the Foundation Degree in Business Management at UCP you can start Level 6 of the BSc (Hons) Business Management to obtain a full honours degree.

Duration Full-time: 3 years (2 full days a week over two semesters per year). Part-time: 4 years (1-2 full days a week over two semesters per year).

P UCAS CODE
N290
TUITION P/A
£8,250 F-T
VALIDATED BY
THE OPEN
UNIVERSITY



BSc (Hons) Business Management (Human Resources Management)

Entry requirements 72 UCAS Points from a related subject and 5 GCSE grades C/4 or above including English and Maths. If you have completed the Foundation Degree in Business Management at UCP you can start Level 6 of the BSc (Hons) Business Management to obtain a full honours degree.

Duration Full-time: 3 years (2 full days a week over two semesters per year). Part-time: 4 years (1-2 full days a week over two semesters per year).

P UCAS CODE
N270
TUITION P/A
£8,250 F-T
VALIDATED BY
THE OPEN
UNIVERSITY



BSc (Hons) Business Management (Marketing)

Entry requirements 72 UCAS Points from a related subject and 5 GCSE grades C/4 or above including English and Maths. If you have completed the Foundation Degree in Business Management at UCP you can start Level 6 of the BSc (Hons) Business Management to obtain a full honours degree.

Duration Full-time: 3 years (2 full days a week over two semesters per year). Part-time: 4 years (1-2 full days a week over two semesters per year).

P UCAS CODE
N260
TUITION P/A
£8,250 F-T
VALIDATED BY
THE OPEN
UNIVERSITY



BSc (Hons) Business Management (Management Accounting)

Entry requirements 72 UCAS Points from a related subject and 5 GCSE grades C/4 or above including English and Maths. If you have completed the Foundation Degree in Business Management at UCP you can start Level 6 of the BSc (Hons) Business Management to obtain a full honours degree.

Duration Full-time: 3 years (2 full days a week over two semesters per year). Part-time: 4 years (1-2 full days a week over two semesters per year).

P UCAS CODE
N230
TUITION P/A
£8,250 F-T
VALIDATED BY
THE OPEN
UNIVERSITY



Foundation Degree in Digital Marketing and Communications

Entry requirements 48 UCAS Points and 5 GCSE grades C/4 or above including English and Maths.

Duration Full-time: 2 years (2 full days a week over two semesters per year).

P UCAS CODE
DMC1
TUITION P/A
£8,250 F-T
VALIDATED BY
THE OPEN
UNIVERSITY



HTQ Pathway Available
Please see page 72 for more information.

BA (Hons) Digital Marketing and Communications

Entry requirements 72 UCAS points and 5 GCSE grades C/4 or above including English and Maths which should be from a related subject.

Duration Full-time: 3 years (2 full days a week over two semesters per year). Part-time: 4 years (1-2 full days a week over two semesters per year).

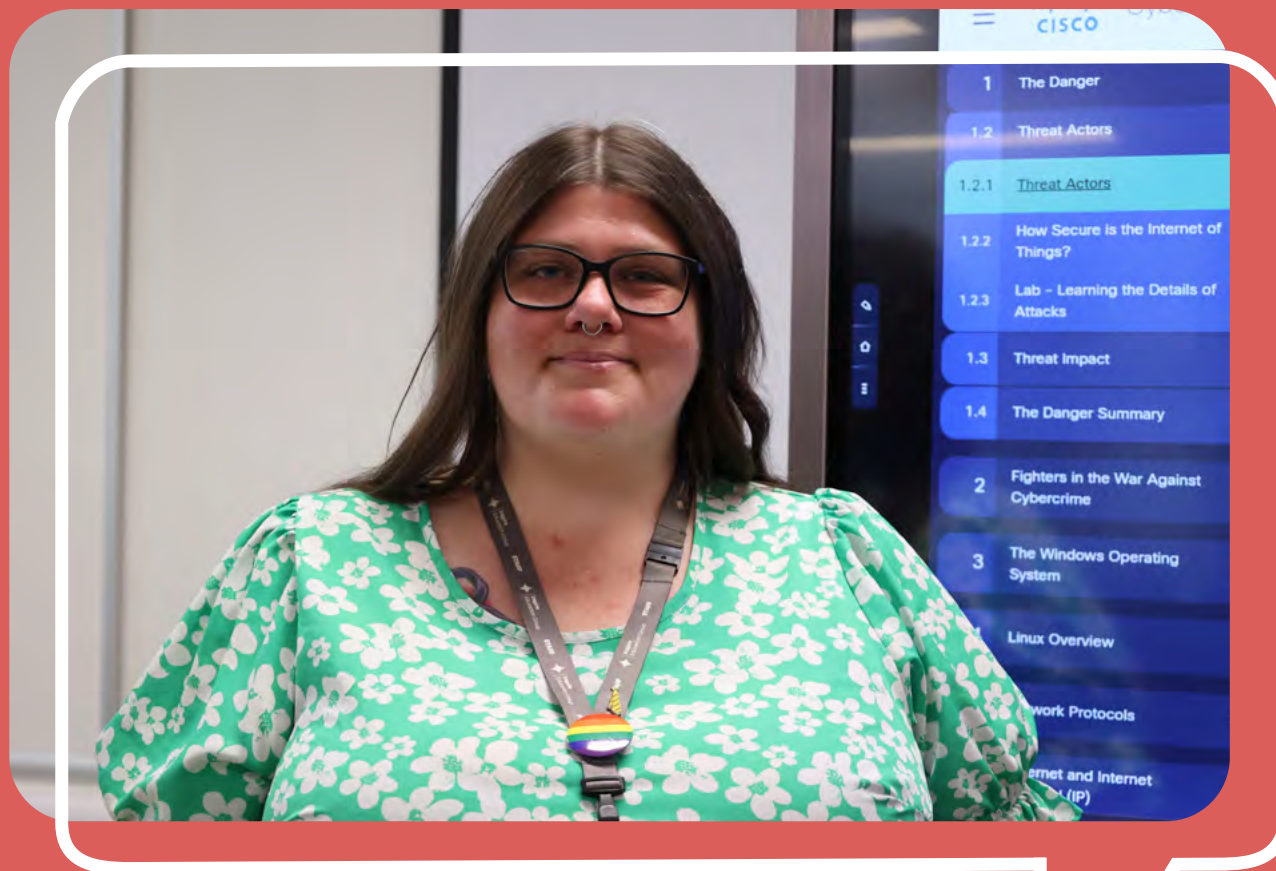
P UCAS CODE
DMC2
TUITION P/A
£8,250 F-T
VALIDATED BY
THE OPEN
UNIVERSITY



Mature students or students who do not have the above qualifications can contact our admissions team on 01733 214466 or admissions@ucp.ac.uk to discuss equivalent qualifications or relevant work experience. For more information on EU and overseas qualifications, UCAS, accreditation of prior learning and failure to meet the entry requirements please visit www.ucp.ac.uk. Fees for part-time study are pro-rata depending on the number of credits you are studying (i.e. 90 credits per year will be 75% of the tuition fee).

COMPUTING AND TECHNOLOGY

UCP's Computing courses capitalise on the booming tech sector, offering students the skills needed for over 2.1 million tech jobs in the UK, including in-demand roles like web/software development, with opportunities growing 2.6 times faster than other sectors. With the continued growth of AI, we will work with you to harness its potential.



"The world of computing is like a giant puzzle. As a lecturer, I love helping students discover the thrill of putting those pieces together and creating something amazing."

Fiona Henry, who graduated with a BSc (Hons) in Computing and Information Systems has gone on to become a Curriculum Leader in Computing at University Centre Peterborough while studying for a Master's degree in Computing (Networking).

BSc (Hons) Computer Science

Entry requirements 64 UCAS Points from a computing related subject and 5 GCSE grades C/4 or above including English and Maths. If you have completed the FD Computer Science at UCP or HND Computing you can start Level 6 of the BSc (Hons) Computer Science degree to obtain a full honours degree.

Duration Full-time: 3 years (2-3 full days a week over two semesters per year). Part-time: 4 years (1-2 full days a week over two semesters per year).

P
UCAS CODE
GGCS
TUITION P/A
£8,250 F-T
VALIDATED BY
THE OPEN
UNIVERSITY

BSc (Hons) Computer Science (Cyber Security)

Entry requirements 64 UCAS Points from a computing related subject and 5 GCSE grades C/4 or above including English and Maths. If you have completed the FD Computer Science at UCP or HND Computing you can start Level 6 of the BSc (Hons) Computer Science degree to obtain a full honours degree.

Duration Full-time: 3 years (2-3 full days a week over two semesters per year). Part-time: 4 years (1-2 full days a week over two semesters per year).

P
UCAS CODE
COMC
TUITION P/A
£8,250 F-T
VALIDATED BY
THE OPEN
UNIVERSITY

BSc (Hons) Computer Science (Networking)

Entry requirements 64 UCAS Points from a computing related subject and 5 GCSE grades C/4 or above including English and Maths. If you have completed the FD Computer Science at UCP or HND Computing you can start Level 6 of the BSc (Hons) Computer Science degree to obtain a full honours degree.

Duration Full-time: 3 years (2-3 full days a week over two semesters per year). Part-time: 4 years (1-2 full days a week over two semesters per year).

P
UCAS CODE
COMN
TUITION P/A
£8,250 F-T
VALIDATED BY
THE OPEN
UNIVERSITY

BSc (Hons) Computer Science (Software Development)

Entry requirements 64 UCAS Points from a computing related subject and 5 GCSE grades C/4 or above including English and Maths. If you have completed the FD Computer Science at UCP or HND Computing you can start Level 6 of the BSc (Hons) Computer Science degree to obtain a full honours degree.

Duration Full-time: 3 years (2-3 full days a week over two semesters per year). Part-time: 4 years (1-2 full days a week over two semesters per year).

P
UCAS CODE
COMS
TUITION P/A
£8,250 F-T
VALIDATED BY
THE OPEN
UNIVERSITY

Diploma in Web Application Development

Entry requirements Applicants must be aged 19 or over. Completion of the 5-step coding challenge set by the Code Institute. Working knowledge of the English Language both written and verbal. Access to a computer/laptop and a broadband connection. Applicants will complete an interview to determine suitability for this course.

Duration This course is delivered entirely online in 1 year or less. This course has a flexible study mode featuring 24hr support.

O
UCAS CODE
N/A
TUITION P/A
£5,421 F-T
VALIDATED BY
GATEWAY
QUALIFICATIONS

Foundation Degree in Computer Science

Entry requirements 48 UCAS Points and 5 GCSE grades C/4 or above including English and Maths.

Duration Full-time: 3 years (2-3 full days a week over two semesters per year). Part-time: 4 years (1-2 full days a week over two semesters per year).

S
UCAS CODE
GC40
TUITION P/A
£8,250 F-T
VALIDATED BY
THE OPEN
UNIVERSITY

Mature students or students who do not have the above qualifications can contact our admissions team on 01733 214466 or admissions@ucp.ac.uk to discuss equivalent qualifications or relevant work experience. For more information on EU and overseas qualifications, UCAS, accreditation of prior learning and failure to meet the entry requirements please visit www.ucp.ac.uk. Fees for part-time study are pro-rata depending on the number of credits you are studying (i.e. 90 credits per year will be 75% of the tuition fee).

HTQ Digital Technologies for England (Cloud Networking)

Entry requirements 48 UCAS Points in computing related subjects and GCSE English and Maths at grades C/4 or above. Our recognition of Pearson's Prior Learning policy means that students' previous learning and experience can be taken into account and they may be awarded certain qualifications (or units of a qualification) based on that learning or experience.

Duration Full-time: 2 years (2-3 full days a week over two semesters per year).

UCAS CODE
D TEN

TUITION P/A
£7,500 F-T

VALIDATED BY
PEARSON



HTQ Digital Technologies for England (Cyber Security)

Entry requirements 48 UCAS Points in computing related subjects and GCSE English and Maths at grades C/4 or above. Our recognition of Pearson's Prior Learning policy means that students' previous learning and experience can be taken into account and they may be awarded certain qualifications (or units of a qualification) based on that learning or experience.

Duration Full-time: 2 years (2-3 full days a week over two semesters per year).

UCAS CODE
D TEC

TUITION P/A
£7,500 F-T

VALIDATED BY
PEARSON



HTQ Digital Technologies for England (Data Analytics)

Entry requirements 48 UCAS Points in computing related subjects and GCSE English and Maths at grades C/4 or above. Our recognition of Pearson's Prior Learning policy means that students' previous learning and experience can be taken into account and they may be awarded certain qualifications (or units of a qualification) based on that learning or experience.

Duration Full-time: 2 years (2-3 full days a week over two semesters per year).

UCAS CODE
D TED

TUITION P/A
£7,500 F-T

VALIDATED BY
PEARSON



HTQ Digital Technologies for England (Software Development and Programming)

Entry requirements 48 UCAS Points in computing related subjects and GCSE English and Maths at grades C/4 or above. Our recognition of Pearson's Prior Learning policy means that students' previous learning and experience can be taken into account and they may be awarded certain qualifications (or units of a qualification) based on that learning or experience.

Duration Full-time: 2 years (2-3 full days a week over two semesters per year).

UCAS CODE
D TES

TUITION P/A
£7,500 F-T

VALIDATED BY
PEARSON



"After I presented my final year project at the UCP Computing Conference, attended by employers from the IT industry, I was invited to an interview at HIVE Learning which led to getting my dream job!"

After completing his BSc (Hons) in Computing and Information Systems, Maciej Kazimierek began employment with HIVE Learning in London working on the development of learning technologies.

CREATIVE

INDUSTRIES



University Centre Peterborough provides comprehensive, creative degrees ranging from art and design to English and performing arts, nurturing creativity and cultural understanding.

Testament to her exceptional literary merit, BA (Hons) English Literature with Creative Writing student, Kirstie Marfleet, was crowned as the University's first ever undergraduate recipient of the Malcolm Bradbury Trust Scholarship.

"The course is fascinating and studying here has provided me with the space to really grow and reflect as a writer and equipped me with the skills needed to hone my craft. Thanks to the bursary I was able to get in touch with the editor of Good Morning Britain who helped me secure a work placement at ITV Studios."

BA (Hons) Acting for Stage and Screen

Entry requirements 88 UCAS Points which should be from a related subject and 5 GCSE grades C/4 or above including English and Maths. Students will also be required to undertake an audition.

Duration Full-time: 3 years (2 full days a week over two semesters per year). Part-time: 4 years (1-2 full days a week over two semesters per year).

P UCAS CODE
7W73
TUITION P/A
£8,250 F-T
VALIDATED BY
THE OPEN
UNIVERSITY

BA (Hons) Digital Arts

Entry requirements 72 UCAS Points and 5 GCSE grades C/4 or above including English and Maths.

Duration Full-time: 3 years (2 full days a week over two semesters per year). Part-time: 4 years (1-2 full days a week over two semesters per year).

P UCAS CODE
DARB
TUITION P/A
£8,250 F-T
VALIDATED BY
THE OPEN
UNIVERSITY

BA (Hons) Digital Arts (Graphic Design)

Entry requirements 72 UCAS Points from a related subject and 5 GCSE grades C/4 or above including English and Maths.

Duration Full-time: 3 years (2 full days a week over two semesters per year).

S UCAS CODE
DARG
TUITION P/A
£8,250 F-T
VALIDATED BY
THE OPEN
UNIVERSITY

BA (Hons) Digital Arts (Photography)

Entry requirements 88 UCAS Points from a related subject and 5 GCSE grades C/4 or above including English and Maths.

Duration Full-time: 3 years (2 full days a week over two semesters per year).

P UCAS CODE
DARP
TUITION P/A
£8,250 F-T
VALIDATED BY
THE OPEN
UNIVERSITY

BA (Hons) English Literature

Entry requirements 88 UCAS Points from a related subject and 5 GCSE grades C/4 or above including English and Maths.

Duration Full-time: 3 years (2 full days a week over two semesters per year). Part-time: 4 years (1-2 full days a week over two semesters per year).

P UCAS CODE
Q300
TUITION P/A
£8,250 F-T
VALIDATED BY
THE OPEN
UNIVERSITY

BA (Hons) English Literature (Creative Writing)

Entry requirements 88 UCAS Points from a related subject and 5 GCSE grades C/4 or above including English and Maths.

Duration Full-time: 3 years (2 full days a week over two semesters per year). Part-time: 4 years (1-2 full days a week over two semesters per year).

P UCAS CODE
Q310
TUITION P/A
£8,250 F-T
VALIDATED BY
THE OPEN
UNIVERSITY

BA (Hons) Journalism

Entry requirements 88 UCAS Points and 5 GCSE grades C/4 or above including English and Maths.

Duration Full-time: 3 years (2 full days a week over two semesters per year). Part-time: 4 years (1-2 full days a week over two semesters per year).

P UCAS CODE
P500
TUITION P/A
£8,250 F-T
VALIDATED BY
THE OPEN
UNIVERSITY

BA (Hons) Media Production

Entry requirements 72 UCAS Points from a related subject and 5 GCSE grades C/4 or above including English and Maths.

Duration Full-time: 3 years (2 full days a week over two semesters per year). Part-time: 4 years (1-2 full days a week over two semesters per year).

P UCAS CODE
P300
TUITION P/A
£8,250 F-T
VALIDATED BY
THE OPEN
UNIVERSITY

HNC/HND Performing Arts (Musical Theatre)

Entry requirements 80 UCAS Points with prior knowledge and skills in performing arts and GCSE grades C/4 in English and Maths. A successful audition is required for this programme.

Duration Full-time: 3 full days a week. HNC is 1 year and HND is 2 years.

E UCAS CODE
1A69
TUITION P/A
£8,250 F-T
VALIDATED BY
PEARSON



Mature students or students who do not have the above qualifications can contact our admissions team on 01733 214466 or admissions@ucp.ac.uk to discuss equivalent qualifications or relevant work experience. For more information on EU and overseas qualifications, UCAS, accreditation of prior learning and failure to meet the entry requirements please visit www.ucp.ac.uk. Fees for part-time study are pro-rata depending on the number of credits you are studying (i.e. 90 credits per year will be 75% of the tuition fee).

EDUCATION

University Centre Peterborough offers a range of Education and Training programmes, including degrees, foundation degrees, top-ups, and professional qualifications, equipping students with the skills and expertise for successful careers in the field.



"The best thing about my course was studying with like-minded peers, who could apply their knowledge and experience to class discussions and further each other's understanding."

After graduating from her Foundation Degree in Early Years and Education with a distinction Amy Morris decided to further her studies and went on to study a BA (Hons) Top-Up Primary Education Studies. She has since secured a funded place with Teach East to complete her teacher training.

Foundation Degree in Early Childhood Studies

Entry requirements 48 UCAS Points and GCSE English Language and Maths at grade 4/C. A minimum of 400 hours pre-entry work experience working with children age 0-11. A confirmed placement in an Early Years setting of a minimum of 12 hours per week and a total of 288 hours per academic year including the identification of a workplace mentor. Admission on the programme is also possible for mature students without formal qualifications but with equivalent professional experience.

Duration Full-time: 2 years (1 full day a week over two semesters per year). Each semester is 12 weeks.



HTQ Pathway Available

Please see page 72 for more information.

P
S
UCAS CODE
LXM1
TUITION P/A
£8,250 F-T
VALIDATED BY
THE OPEN UNIVERSITY



Foundation Degree in Primary Education

Entry requirements 48 UCAS Points and GCSE English Language and Maths at grade 4/C. A minimum of 400 hours pre-entry work experience working with children age 0-11. A confirmed placement in an Early Years setting of a minimum of 12 hours per week and a total of 288 hours per academic year including the identification of a workplace mentor. Admission on the programme is also possible for mature students without formal qualifications but with equivalent professional experience.

Duration Full-time: 2 years (1 full day a week over two semesters per year). Each semester is 12 weeks.

P
S
UCAS CODE
LXM2
TUITION P/A
£8,250 F-T
VALIDATED BY
THE OPEN UNIVERSITY

BA (Hons) Early Childhood Studies (Top-Up)

Entry requirements A minimum of 400 hours pre-entry work experience within an education setting. A confirmed placement of a minimum of 40 days per academic year, including identification of a Workplace Mentor. A 240-credit Level 5 Qualification (Foundation Degree or equivalent). An enhanced DBS check.

Duration Full-time: 1 year (1 full day a week over two semesters per year). Each semester is 12 weeks. Part-time: 2 years.

P
UCAS CODE
X303
TUITION P/A
£8,250 F-T
VALIDATED BY
THE OPEN UNIVERSITY



BA (Hons) Education Studies (Top-Up)

Entry requirements A minimum of 400 hours pre-entry work experience within an education setting. A confirmed placement of a minimum of 40 days per academic year, including identification of a Workplace Mentor. A 240-credit Level 5 Qualification (Foundation Degree or equivalent). An enhanced DBS check.

Duration Full-time: 1 year (1 full day a week over two semesters per year). Each semester is 12 weeks. Part-time: 2 years.

P
UCAS CODE
X300
TUITION P/A
£8,250 F-T
VALIDATED BY
THE OPEN UNIVERSITY

BA (Hons) Primary Education (Top-Up)

Entry requirements A minimum of 400 hours pre-entry work experience within an education setting. A confirmed placement of a minimum of 40 days per academic year, including identification of a Workplace Mentor. A 240-credit Level 5 Qualification (Foundation Degree or equivalent). An enhanced DBS check.

Duration Full-time: 1 year (1 full day a week over two semesters per year). Each semester is 12 weeks. Part-time: 2 years.

P
UCAS CODE
X302
TUITION P/A
£8,250 F-T
VALIDATED BY
THE OPEN UNIVERSITY

Certificate/Professional Graduate Diploma in Education (Teaching Post-16 and Further Education)

Entry requirements Access to a minimum of 150 teaching hours over 2 years with no fewer than 75 hours in one year. An enhanced DBS check, an interview and two appropriate references. Certificate: Minimum Level 3 qualification in the subject(s) you intend to teach. Professional Graduate Diploma: Hold a UK first degree.

Duration Part-time: 2 years (1 evening a week over two semesters per year).

P
S
UCAS CODE
N/A
TUITION P/A
£2,500 P-T
VALIDATED BY
BISHOP GROSSETESTE UNIVERSITY



Mature students or students who do not have the above qualifications can contact our admissions team on 01733 214466 or admissions@ucp.ac.uk to discuss equivalent qualifications or relevant work experience. For more information on EU and overseas qualifications, UCAS, accreditation of prior learning and failure to meet the entry requirements please visit www.ucp.ac.uk. Fees for part-time study are pro-rata depending on the number of credits you are studying (i.e. 90 credits per year will be 75% of the tuition fee).

University Centre Peterborough's engineering courses offer a specialised curriculum, providing the essential knowledge, understanding, and industry-focused practical skills, tailored for success in the dynamic engineering sector.



Starting with a Level 1 Engineering course at Peterborough College, Ricardo Santos' dedication propelled him all the way to a First Class Honours degree in Engineering at UCP. Now, after eight years at Anglian Water, Ricardo's UCP experience has prepared him to seamlessly apply his knowledge and expertise in the workplace, making a significant contribution to the engineering field.

"Building relationships with my lecturers from College created a supportive environment that made a long journey incredibly rewarding!"

HNC in Engineering (Electrical and Electronic)

Entry requirements 48 UCAS Points from an engineering related subject and 5 GCSE grades C/4 or above including English and Maths.

Duration Full-time: 1 year (2 full days a week over two semesters). Part-time: 2 years (1 full day a week over two semesters per year).



HTQ Pathway Available

Please see page 72 for more information.

UCAS CODE
H600

TUITION P/A
£7,500 F-T
£3,750 P-T

VALIDATED BY
PEARSON

HNC in Engineering (Mechanical)

Entry requirements 48 UCAS Points from an engineering related subject and 5 GCSE grades C/4 or above including English and Maths.

Duration Full-time: 1 year (2 full days a week over two semesters). Part-time: 2 years (1 full day a week over two semesters per year).



HTQ Pathway Available

Please see page 72 for more information.

UCAS CODE
H500

TUITION P/A
£7,500 F-T
£3,750 P-T

VALIDATED BY
PEARSON

HND in Engineering (General)

Entry requirements 48 UCAS Points from an engineering related subject and 5 GCSE grades C/4 or above including English and Maths.

Duration HNC: Part-time 2 years (1 full day a week over two semesters per year). HND: An additional 2 years (1 full day a week over two semesters per year).

UCAS CODE
H600

TUITION P/A
£7,500 F-T
£3,750 P-T

VALIDATED BY
PEARSON

HTQ HND in Electrical and Electronic Engineering for England

Entry requirements 88 UCAS Points in engineering related subjects and GCSE English, Maths and Science at grades C/4 or above. To progress on to the HND you will need to successfully complete the HNC in General, Mechanical, Electrical/Electronic.

Duration Full-time: 1 year (2 full days a week over two semesters). Part-time: 2 years (1 full day a week over two semesters per year).



UCAS CODE
H400

TUITION P/A
£7,500 F-T
£3,750 P-T

VALIDATED BY
PEARSON

HTQ HND in Mechanical Engineering for England

Entry requirements 88 UCAS Points in engineering related subjects and GCSE English, Maths and Science at grades C/4 or above. To progress on to the HND you will need to successfully complete the HNC in General, Mechanical, Electrical/Electronic.

Duration Full-time: 1 year (2 full days a week over two semesters). Part-time: 2 years (1 full day a week over two semesters per year).



UCAS CODE
H700

TUITION P/A
£7,500 F-T
£2,750 P-T

VALIDATED BY
PEARSON

BEng (Hons) Engineering (Electrical/Mechanical) (Top-Up)

Entry requirements The one-year BEng top-up programme is designed to complete the journey to a full degree programme. You will need to have the HND/HTQ qualification in Engineering (General), Electrical and Electronic Engineering or Mechanical Engineering or Level 5 equivalent, plus GCSE English and Maths grades 4/C or above.

Duration Full-time: 1 year (2 full days a week over two semesters). Part-time: 2 years (1 full day a week over two semesters per year).

UCAS CODE
H120

TUITION P/A
£8,250 F-T
£4,125 P-T

VALIDATED BY
THE OPEN UNIVERSITY

Subject to validation

Mature students or students who do not have the above qualifications can contact our admissions team on 01733 214466 or admissions@ucp.ac.uk to discuss equivalent qualifications or relevant work experience. For more information on EU and overseas qualifications, UCAS, accreditation of prior learning and failure to meet the entry requirements please visit www.ucp.ac.uk.

— SCIENCE



University Centre Peterborough offers a dynamic range of science courses, fostering research skills and innovation to prepare students for impactful careers in diverse scientific fields such as animal management and forensic investigation.

BSc (Hons) Forensic Investigation graduate, Maddi Hobman, has secured a role as Victim Care Officer within the Gloucestershire Constabulary.

"I really enjoyed the opportunities to gain industry experience, such as attending a post-mortem, and being put in contact with criminal justice professionals."

HND in Animal Conservation and Countryside Management

Entry requirements 64 UCAS Points in an animal or science related subject with at least GCSE English and Maths at grades 4/C or above.

Duration Full-time: 2 years (2 full days a week over two semesters per year). Part-time: 4 years (1 full day a week over two semesters per year).

S UCAS CODE
D400
TUITION P/A
£7,500 F-T
£3,750 P-T
VALIDATED BY
PEARSON



HND in Animal Management (Animal Behaviour and Welfare)

Entry requirements 64 UCAS Points in an animal or science related subject with at least GCSE English and Maths at grades 4/C or above.

Duration Full-time: 2 years (2 full days a week over two semesters per year). Part-time: 4 years (1 full day a week over two semesters per year).

S UCAS CODE
D300
TUITION P/A
£7,500 F-T
£3,750 P-T
VALIDATED BY
PEARSON

BSc (Hons) Animal Management and Welfare (Top-Up)

Entry requirements A Level 5 qualification (240 credits) in an animal-related subject such as a Foundation Degree or Higher National Diploma at Merit grade or above and GCSE grades 4/C in English Language and Maths. Applicants will also need a suitable academic reference.

Duration Full-time: 1 year (2 full days a week over two semesters per year). Part-time: 2 years (1-2 full days a week over two semesters per year).

S UCAS CODE
D302
TUITION P/A
£8,250 F-T
VALIDATED BY
THE OPEN UNIVERSITY

Foundation Degree in Forensic Investigation

Entry requirements 64 UCAS Points from a computing related subject. 5 GCSE grades C/4 or above including English and Maths.

Duration Full-time: 2 years (2 full days a week over two semesters per year). Part-time: 3 years (1-2 full days a week over two semesters per year).

P UCAS CODE
F411
TUITION P/A
£8,250 F-T
VALIDATED BY
THE OPEN UNIVERSITY

BSc (Hons) Forensic Investigation

Entry requirements 64 UCAS Points from a computing related subject and 5 GCSE grades C/4 or above including English and Maths.

Duration Full-time: 3 years (2 full days a week over two semesters per year). Part-time: 4 years (1-2 full days a week over two semesters per year).

P UCAS CODE
SN28
TUITION P/A
£8,250 F-T
VALIDATED BY
THE OPEN UNIVERSITY



“Studying at UCP alongside work meant that I could take the theoretical aspects I was being taught and use them to reinforce my understanding of the practical parts of my role.”

Siobhan studied at University Centre Peterborough and worked alongside as a Research Scientist at LabCorp. She exemplifies the flexible nature of our programmes allowing students to work while studying.

Mature students or students who do not have the above qualifications can contact our admissions team on 01733 214466 or admissions@ucp.ac.uk to discuss equivalent qualifications or relevant work experience. For more information on EU and overseas qualifications, UCAS, accreditation of prior learning and failure to meet the entry requirements please visit www.ucp.ac.uk. Fees for part-time study are pro-rata depending on the number of credits you are studying (i.e. 90 credits per year will be 75% of the tuition fee).

SOCIAL SCIENCES

AND HUMANITIES

University Centre
Peterborough offers
a diverse array of
Social Sciences
and Humanities
courses, fostering
critical thinking and
research skills.



**“The supervisors and tutors
I've had have absolutely
been a godsend and it made
my journey a lot easier!”**

Shabana Bi, who graduated with a Diploma in Therapeutic Counselling, has opened her own private counselling clinic where she specialises in bereavement counselling and is now a member of the National Counselling and Psychotherapy Society (NCPs).

BA (Hons) Criminology

Entry requirements 88 UCAS Points and 5 GCSE grades C/4 or above including English and Maths.

Duration Full-time: 3 years (2 full days a week over two semesters per year). Part-time: 4 years (1-2 full days a week over two semesters per year).

P
UCAS CODE
M900
TUITION P/A
£8,250 F-T
VALIDATED BY
**THE OPEN
UNIVERSITY**

BA (Hons) History and Archaeology

Entry requirements 88 UCAS Points from a related subject and 5 GCSE grades C/4 or above.

Duration Full-time: 3 years (2 full days a week over two semesters per year). Part-time: 4 years (1-2 full days a week over two semesters per year).

P
UCAS CODE
V400
TUITION P/A
£8,250 F-T
VALIDATED BY
**THE OPEN
UNIVERSITY**

BA (Hons) Psychosocial Studies

Entry requirements 88 UCAS Points from a related subject and 5 GCSE grades C/4 or above including English and Maths.

Duration Full-time: 3 years (2 full days a week over two semesters per year). Part-time: 4 years (1-2 full days a week over two semesters per year).

P
UCAS CODE
C880
TUITION P/A
£8,250 F-T
VALIDATED BY
**THE OPEN
UNIVERSITY**

BA (Hons) Sociology

Entry requirements 88 UCAS Points from a related subject and 5 GCSE grades C/4 or above including English and Maths.

Duration Full-time: 3 years (2 full days a week over two semesters per year). Part-time: 4 years (1-2 full days a week over two semesters per year).

P
UCAS CODE
L300
TUITION P/A
£8,250 F-T
VALIDATED BY
**THE OPEN
UNIVERSITY**

DipHE Therapeutic Counselling (CBT / Person-Centred)

Entry requirements Applicants must have GCSE English and Maths at grade 4/C or above, a Certificate in Counselling Skills and Theory Level 3 and an enhanced DBS check.

Duration 2 years. Option 1: 1 full day a week over two semesters per year. Option 2: 1 afternoon and evening a week on the same day over two semesters per year.

S
M
UCAS CODE
N/A
TUITION
£7,500 F-T
£3,750 P-T P/A
VALIDATED BY
**THE OPEN
UNIVERSITY**

BA (Hons) Therapeutic Counselling and Psychotherapy (Top-Up)

Entry requirements A recognised Diploma in Counselling or equivalent at Level 5, or a Counsellor with a Level 4 qualification with 2 years' experience and a Level 5 qualification in another relevant subject. Formal training in counselling and/or psychotherapy. Applicants must meet the National Counselling Society (NCS) supervised practice requirements of 100 hours or equivalent and demonstrate current professional registration with a relevant organisation, e.g. BACP, NCS, UKCP or equivalent. Applicants must have an enhanced DBS check. Candidates will be invited to an interview where they must provide evidence of the following: Ability to write and discuss assignments at an undergraduate level, recent reading of counselling research literature and reflection on learning experiences from recent and relevant courses.

Duration Full-time: 1 year (1 full day a week over two semesters per year).

P
S
UCAS CODE
PCCP
TUITION P/A
£8,250 F-T
VALIDATED BY
**THE OPEN
UNIVERSITY**

DipHE Adult Care Leadership and Management

Entry requirements 48 UCAS Points and GCSE English and Maths at grades C/4 or above.

Duration Full-time: 2 years on a blended delivery model. Part-time: 2 years per level. Modular study is also available.

P
S
M
UCAS CODE
B740
TUITION
£7,500 F-T
£3,750 P-T P/A
VALIDATED BY
**THE OPEN
UNIVERSITY**

Mature students or students who do not have the above qualifications can contact our admissions team on 01733 214466 or admissions@ucp.ac.uk to discuss equivalent qualifications or relevant work experience. For more information on EU and overseas qualifications, UCAS, accreditation of prior learning and failure to meet the entry requirements please visit www.ucp.ac.uk. Fees for part-time study are pro-rata depending on the number of credits you are studying (i.e. 90 credits per year will be 75% of the tuition fee).

Campus Key **P** Peterborough Campus **S** Stamford Campus

M Modular Study / Micro-Credentials

Visit www.ucp.ac.uk for full course info and to apply

University Centre Peterborough offers sport degrees and foundation degrees that blend theory with practical application, preparing students for success in the dynamic and evolving field of sports management and performance.

SPORT



Upon graduating with a BSc (Hons) in Sport and Exercise Science, Amy Lomas transitioned into the role of Performance Analyst at Norwich City Football Club and studied for her MSc in Football Coaching and Analysis. A year later, she returned to Peterborough to take on the position of Sports Lecturer at Inspire Education Group, where she has excelled in her career.

"The course was the perfect mix of theory and practical study which helped me progress in to my role of Performance Analysis at Norwich City Football Club."

Foundation Degree in Sport and Exercise Science (Coaching)

Entry requirements 72 UCAS Points from a sports related subject and 5 GCSE grades C/4 or above including English and Maths.

Duration Full-time: 2 years (2 full days a week over two semesters per year). Part-time: 3 years (1-2 full days a week over two semesters per year).

S UCAS CODE
N872
TUITION P/A
£8,250 F-T
VALIDATED BY
**THE OPEN
UNIVERSITY**

BSc (Hons) Sport and Exercise Science (Coaching)

Entry requirements 72 UCAS Points from a sports related subject and 5 GCSE grades C/4 or above including English and Maths.

Duration Full-time: 3 years (2 full days a week over two semesters per year). Part-time: 4 years (1-2 full days a week over two semesters per year).

P UCAS CODE
N871
TUITION P/A
£8,250 F-T
VALIDATED BY
**THE OPEN
UNIVERSITY**

BSc (Hons) Sport and Exercise Science

Entry requirements 72 UCAS Points from a sports related subject and 5 GCSE grades C/4 or above including English and Maths.

Duration Full-time: 3 years (2 full days a week over two semesters per year). Part-time: 4 years (1-2 full days a week over two semesters per year).

P UCAS CODE
N870
TUITION P/A
£8,250 F-T
VALIDATED BY
**THE OPEN
UNIVERSITY**

HTQ Community Coaching for England

Entry requirements 48 UCAS Points in engineering related subjects and GCSE English and Maths at grades C/4 or above. Our recognition of Pearson's Prior Learning policy means that students' previous learning and experience can be taken into account and they may be awarded certain qualifications (or units of a qualification) based on that learning or experience.

Duration Full-time: 1 year (2 full days a week over two semesters). Then you can progress to one of our degree programmes listed above.

P
S UCAS CODE
N873
TUITION P/A
£7,500 F-T
VALIDATED BY
PEARSON



"The course offered a wide range of topics, allowing a broad understanding of different topics and this enabled me to develop my passion for a particular subject."

University Centre Peterborough doesn't only support their students to gain an excellent education, we also make sure they are set up to enter the world of work. Kian is now working towards his dream career, in an NHS cardiology department.

Mature students or students who do not have the above qualifications can contact our admissions team on 01733 214466 or admissions@ucp.ac.uk to discuss equivalent qualifications or relevant work experience. For more information on EU and overseas qualifications, UCAS, accreditation of prior learning and failure to meet the entry requirements please visit www.ucp.ac.uk. Fees for part-time study are pro-rata depending on the number of credits you are studying (i.e. 90 credits per year will be 75% of the tuition fee).

HIGHER

TECHNICAL QUALIFICATIONS



Before enrolling at University Centre Peterborough, Anjuman Rashid, an Early Years Practitioner graduate, was working full time and wanted to progress her career by furthering her education. Now she has graduated, Anjuman has a passion for education and has already started the next step of her journey.

"I loved the challenge of working and studying together. I felt very supported by UCP. I have already started my BA Honours, and I'm currently studying my top-up year."



Higher Technical Qualifications (HTQs) are technical qualifications that have been developed by employers and awarding bodies, so you'll get the **right training, knowledge, and skills to succeed in the workplace.**



What are HTQs?

HTQs are technical qualifications that have been developed by employers and awarding bodies, so you'll get the right training, knowledge, and skills to succeed in the workplace. HTQs are a great way of scaffolding learning for students and are mapped to the same vocational standard as degree apprenticeships and T Levels.

What HTQs are available?

There are many types of HTQs such as:

- HNDs
- HNCs
- Foundation Degrees
- Higher Education Diplomas

At University Centre Peterborough we offer HTQ routes in animal care, computing, education, engineering, marketing, social science and sport.

What Level are HTQs?

HTQs are Level 4 or 5 qualifications, depending on the course you choose. You can choose to 'top-up' and progress to a full degree on completion of your course. All of our HTQ provision is identified by the HTQ badge you can see above. We offer provision to a full degree from all of our HTQ courses.

HTQ Courses

Animal Care

- Animal Conservation and Countryside Management

Business

- Marketing Executive

Computing and Technology

- Digital Technologies for England
- Digital Technologies for England (Cloud Networking)
- Digital Technologies for England (Cyber Security)
- Digital Technologies for England (Data Analytics)
- Digital Technologies for England (Software Development and Programming)

Education

- Early Childhood Practitioner

Engineering

- General Engineering
- Electrical and Electronic Engineering for England
- Mechanical Engineering for England

Social Science

- Leader in Adult Care

Sport

- Community Coaching for England



Emily Pearce, a Marketing Executive graduate, was able to prioritise maintaining her family life and career while studying part-time. She confirmed that had this structure not been available she would not have considered returning to higher education.

"The course structure that UCP offers is perfect for anyone with children and those who need to work alongside their studies. I was able to fit my studies around my family and also work part-time with plenty of time left for independent study."

Visit www.ucp.ac.uk for full course info and to apply

ACCESS TO HIGHER EDUCATION

Start your HE journey with an Access to HE course. This is a full Level 3 qualification that is delivered at Peterborough College and is accepted by UCP as a standard entry qualification for most degree courses. Better yet, if you complete your course and start a degree with University Centre Peterborough, you may be able to have your course fee waived.



"It was nice being a mature student, and the atmosphere among my classmates was friendly, with everyone sharing the same goal. We all got along well, and it felt like home."

Ellie started something amazing with an Access to HE course, going on to graduate with First Class Honours in Criminology at University Centre Peterborough, before enrolling on a Master's degree in Forensic Psychological Studies.

Access to Higher Education (Business)

Entry requirements Students will need GCSE English and Maths at grades C/4 or above to enter the Access to Higher Education (Business) course.

Duration Full-time: 1 year (16 hours a week for 38 weeks a year).
For more information please visit www.peterborough.ac.uk.

P
UCAS CODE
N/A
TUITION P/A
VARIABLE
VALIDATED BY
CAVA

Access to Higher Education (Humanities and Social Sciences)

Entry requirements Students will need GCSE English and Maths at grades C/4 or above to enter the Access to Higher Education (Humanities and Social Sciences). Foreign equivalents and Functional Skills Level 2 can be considered on a case by case basis.

Duration Full-time: 1 year (16 hours a week for 38 weeks a year).
For more information please visit www.peterborough.ac.uk.

P
UCAS CODE
N/A
TUITION P/A
VARIABLE
VALIDATED BY
CAVA

Access to Higher Education (Science)

Entry requirements For entry onto the Access to Higher Education (Science) course, students must hold a Level 2 Science qualification (such as GCSE Science at grade C/4 or above, BTEC Level 2 in Applied Science at Merit or Pre-Access Certificate with core science content) and GCSE English and Maths at grades C/4 or above. Foreign equivalents and Functional Skills Level 2 can be considered on a case by case basis.

Duration Full-time: 1 year (16 hours a week for 38 weeks a year).
For more information please visit www.peterborough.ac.uk.

P
UCAS CODE
N/A
TUITION P/A
VARIABLE
VALIDATED BY
CAVA

Pre-Access Certificate in Skills for Employment, Training and Personal Development

Entry requirements For entry onto the Pre-Access course, students should hold Functional Skills Level 1 or above in English and Maths. However, formal qualifications may not be necessary for entry to this course if you are able to demonstrate relevant industry experience or evidence of other work training.

Duration Full-time: 1 year (16 hours a week for 38 weeks a year).

P
UCAS CODE
N/A
TUITION P/A
VARIABLE
VALIDATED BY
CAVA



"My lecturers were always there, ready to assist with any question or concern. Their guidance propelled me toward postgraduate studies, leaving me more knowledgeable about the industry."

Former Prison Officer, Prince Gumed, graduated from the BA (Hons) Psychosocial Studies course at University Centre Peterborough (UCP), and has since progressed to study a Master's degree in Mental Health Nursing at the University of Bedfordshire.

ACCOUNTING AND PROFESSIONAL COURSES

Based at UCP, Anglia Professional Training (APT) is a fully accredited AAT exam and study centre offering a comprehensive range of accountancy qualifications. APT is also accredited with CIMA, ACCA and ICAEW allowing us to offer a full study programme into these specialised accountancy areas and a range of professional courses for both industry and individuals.



"Weekly classroom-based training, coupled with the hands-on experience, really helped me to develop into the accountant I am today, and I have the apprenticeship to thank for that."

Will Blower studied Business, Sociology and Psychology at A Level, before enrolling on an apprenticeship programme with Anglia Professional Training a business focused delivery partner of Inspire Education Group. Five years on, Will has completed his accountancy qualifications and now runs his own accountancy practice, Realise Finance.

Professional Accounting or Taxation Technician Apprenticeship Standard Level 4



Entry requirements We will work with you to determine your current level of attainment and ensure you are enrolled on the correct programme to best suit you and your employer.

Duration 18 - 24 months.

After you study, talk to us at UCP as you may be able to top-up to degree study.

Operations or Departmental Manager Apprenticeship Standard Level 5



Entry requirements We will work with you to determine your current level of attainment and ensure you are enrolled on the correct programme to best suit you and your employer.

Duration 18 - 24 months.

After you study, talk to us at UCP as you may be able to top-up to degree study.

Chartered Legal Executive Apprenticeship Standard Level 6



Entry requirements We will work with you to determine your current level of attainment and ensure you are enrolled on the correct programme to best suit you and your employer.

Duration 60 months.

After you study, talk to us at UCP as you may be able to top-up to degree study.

Accountancy or Taxation Professional Apprenticeship Standard Level 7



Entry requirements We will work with you to determine your current level of attainment and ensure you are enrolled on the correct programme to best suit you and your employer.

Duration 36 months.

After you study, talk to us at UCP as you may be able to top-up to degree study.

Professional Diploma in Accounting AAT Level 4



Entry requirements AAT Foundation Certificate in Accounting or the AAT Foundation Diploma in Accounting and Business. It is also suitable for those who are at a more intermediate level and looking to develop their skills in accounting, or for those who have already started working in finance and who have a need and desire to attain formal recognition of their skills.



Duration 37 weeks.

CPQ Advanced CILEX Level 5



Entry requirements Law degree or equivalent. Depending on your degree, exemptions may also be awarded to some of the advanced stage modules.

Duration 2 years.

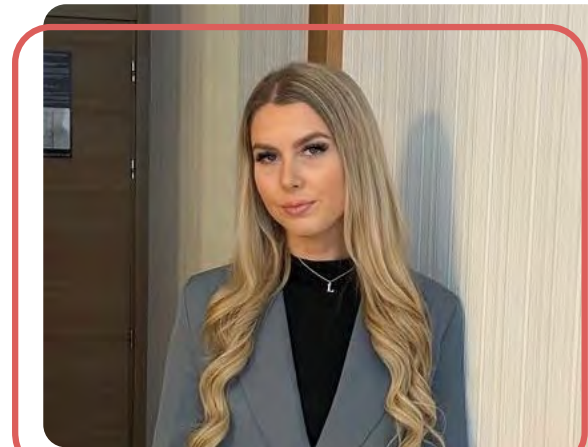


Diploma in Management and Leadership CMI Level 5



Entry requirements No formal entry requirements, however, it is expected that applicants are working within or towards a management role at junior/middle management level.

Duration 36 weeks.



Olivia Humphries recently completed a Level 3 Paralegal Apprenticeship with Inspire Education Group partner, Anglia Professional Training (APT). Olivia has gone on to work in the legal sector, working for an energy company that helps to determine land rights for companies involved in laying gas and power supply pipelines.

"My positive experience has led me to continue my training and development with APT, which I hope will further my career."

Mature students or students who do not have the above qualifications can contact our admissions team on 01733 214466 or admissions@ucp.ac.uk to discuss equivalent qualifications or relevant work experience. For more information on EU and overseas qualifications, UCAS, accreditation of prior learning and failure to meet the entry requirements please visit www.ucp.ac.uk. Fees for part-time study are pro-rata depending on the number of credits you are studying (i.e. 90 credits per year will be 75% of the tuition fee).

Campus Key P Peterborough Campus S Stamford Campus

Visit www.ucp.ac.uk for full course info and to apply

MODULAR/ MICRO CREDENTIALS

Micro-credentials or short courses are validated by The Open University or Pearson (HN Flex). They offer access to bite-sized chunks of learning that can help you develop knowledge and skills in a specific area. The modules offered by University Centre Peterborough are taken from full HE qualifications.



"After years of not feeling fulfilled by my normal day job, and lots of people telling me I'd be a good counsellor, I decided to give it a go. The course content was great and the tutors were really engaging. I was able to fit the course around my job as I was able to complete it in half a day per week."

Now fully qualified, Joe Griffiths-Barrasso hopes to open his own clinic.

We currently have modules from our 'Adult Care Leadership and Management' and 'Counselling Diploma' available to study on a modular basis.

Micro-Credentials / Modular Learning

Micro-credentials or short courses are validated by The Open University (OU) or Pearson (HN Flex). They offer access to bite-sized chunks of learning that can help you develop knowledge and skills in a specific area.

The modules offered by UCP are taken from full HE qualifications. They can be used for CPD, to become familiar with HE studies or to progress onto a full programme. They may be delivered face-to-face, online or a mix of both.

Upon completion (usually around 12 weeks but maybe as little as 6 weeks) you will get a certificate that can be added to your CV and shows you are up-to-date with the latest industry developments.

Entry criteria and module combinations leading to a full award are available on our website. Please look at individual courses and those with an **M** icon can be studied on a modular basis.

Your learning experience will start with an induction the week before your course starts. This will introduce the Virtual Learning Environment (VLE), student support, policies, and procedures that you need to be aware of. This may be online or in person.

At the end of your course UCP will offer an optional Next Steps session where among the topics to be discussed will be information about further micro-credentials, progression to a full degree programme and employability support. This may be online or in-person.

Funding Your Studies

Personal payment or employer sponsorship can be used to fund the provision. From January 2026 it is expected that funding will be available from Student Finance. Lifelong Learning Entitlement (LLE) funding criteria and eligibility can be found at www.gov.uk/government/publications/lifelong-learning-entitlement-lle-overview.

You may also want to talk to your employer who may sponsor you and take advantage of the new levy reform. It should be noted that this will be determined by the government and its proposed legislation.

The OU Validated Diploma Module Fee

1. The OU validated Diploma 30 credit modules in Counselling and in the Leadership and Management in Adult Social Care will cost £1,500 to study.
2. Those studying on campus and if funded by LLE, may also be entitled to maintenance loans or grants.
3. Fee Liability - Students will be liable for full fees 14 days after the first class.
4. Details about fee liability are explained further in the UCP HE Fee Policy.
5. The module cost will not cover travel, personal computers or visits/trips which are not part of the curriculum.
6. Transferring credits to full qualifications: On completion and achievement of a 30 credit micro-credential/short course, the student can then transfer to the main qualification. In such instances, credits will be transferred and the payments made will be deducted from the qualification cost for that academic year.

What if the Course or Module That I Want to Study is Not Listed?

We continue to add to our modular offer and if a module isn't listed then please talk to our Admissions team.



DipHE Adult Care Leadership and Management

Entry requirements 48 UCAS Points and GCSE English and Maths at grades C/4 or above.

Duration Full-time: 2 years on a blended delivery model. Part-time: 2 years per level. Modular study is also available (£1,500 for 30 credits).

UCAS CODE
B740

TUITION
£7,500 F-T
£3,750 P-T P/A

VALIDATED BY
THE OPEN
UNIVERSITY

DipHE Therapeutic Counselling (CBT / Person-Centred)

Entry requirements Applicants must have GCSE English and Maths at grade 4/C or above, a Certificate in Counselling Skills and Theory Level 3 and an enhanced DBS check.

Duration 2 years. Option 1: 1 full day a week over two semesters per year. Option 2: 1 afternoon and evening a week on the same day over two semesters per year. Modular study is also available (£1,500 for 30 credits).

UCAS CODE
N/A

TUITION
£7,500 F-T
£3,750 P-T P/A

VALIDATED BY
THE OPEN
UNIVERSITY

Mature students or students who do not have the above qualifications can contact our admissions team on 01733 214466 or admissions@ucp.ac.uk to discuss equivalent qualifications or relevant work experience. For more information on EU and overseas qualifications, UCAS, accreditation of prior learning and failure to meet the entry requirements please visit www.ucp.ac.uk. Fees for part-time study are pro-rata depending on the number of credits you are studying (i.e. 90 credits per year will be 75% of the tuition fee).

Campus Key **P** Peterborough Campus **S** Stamford Campus
M Modular Study / Micro-Credentials

Visit www.ucp.ac.uk for full course info and to apply

Gain a globally recognised degree with one of the **largest universities in Europe.**



The exciting partnerships between University Centre Peterborough (UCP) and The Open University (OU) deliver high-quality and affordable degrees to Peterborough, Stamford and the wider Cambridgeshire and Lincolnshire areas.

This partnership strengthens the growing provision that University Centre Peterborough has been offering since it expanded in August 2020 when it became part of the Inspire Education Group.

The Open University (OU) was created over 50 years ago and is the UK's largest university with students of all ages and backgrounds. They have pioneered distance learning and helped over 2 million people worldwide make their ambition a reality. The OU offers over 200 qualifications across a wide range of subjects, including postgraduate degrees, undergraduate honours degrees, certificates and diplomas, many accredited by leading professional bodies.

UCP also partners with **Bishop Grosseteste University** for education and teaching courses, **Pearson Edexcel** for HNC/HND programmes and the **Code Institute** for web development courses.

We are also proud to partner with the **Eastern School of Performing Arts (ESPA)** in Stamford to deliver our musical theatre programmes. ESPA provide a supportive environment that fosters not only the artistic development but also intellectual and personal development within all its students. The training is based around practical sessions and performance experience, where the three skills are brought together.



“The Open University puts students first and this aligns with University Centre Peterborough's mission of enabling, empowering and engaging with students and communities to achieve their potential. Their commitment to educational opportunity alongside the delivery of high-quality education is what we at UCP are all about.

The OU have a global reputation which will benefit the progression of our students into employment both in the UK and worldwide. This partnership will enable UCP to continue to support both school leavers and mature students, and in turn meet the needs of the city and region.”

- Liz Knight, Academic Director, University Centre Peterborough



HOW TO APPLY

Congratulations on choosing a course to study at University Centre Peterborough! Your next step is to make an application. Our Admissions team are on hand to help you through the process.

Full-Time Students

All full-time applications must be made to UCAS via www.ucas.com. This is where all full-time students applying to university must make their application. The institution code for University Centre Peterborough is **P56** and you will find all course codes on the course pages in this prospectus. The application process is straightforward, but it's best to have all the necessary documents and personal statement prepared in advance. Before you apply, please check that you meet the entry requirements which are listed on the course information pages.

Part-Time Students

All part-time applications can be made directly to University Centre Peterborough. Part-time application forms can be downloaded via our website, located under 'Enrolment' and 'How to Apply'. Before you apply, please check that you meet the entry requirements which are listed on the course information pages. **If you need support, please contact the Admissions Office on 01733 214466 or admissions@ucp.ac.uk.**

When to Apply

We advise you make an application for your chosen course as soon as possible to secure your place. Talk to our Admissions team who are here to help every step of the way. Once we have processed your application, we will update you with an outcome.

- **First UCAS Deadline** Applications for the majority of full-time courses will be made by 31 January 2025 for the September 2025 intake. If you have not made your application by this date you can still apply to University Centre Peterborough at any time afterwards.
- **UCAS Extra** Starts in February. If you missed the first UCAS deadline, you can still apply through UCAS Extra. This also gives you the opportunity to add University Centre Peterborough as an additional choice if you have used all five choices and are not holding any offers.
- **UCAS Clearing** Starts in July. Clearing is for those who have not yet applied or students who have waited until they have received their grades. However, you do not need to wait until you receive your grades before applying through Clearing. If you have applied and been accepted at another university, you still have the opportunity to change to study at University Centre Peterborough. If you don't get the grades you expected, don't panic. Just contact us during Clearing and we can usually confirm your place very quickly. We are used to helping students at this time of year.

Types of Offer

When you make an application, you will receive one of the following offers:

- **Conditional Offer** You will have to meet certain conditions before you start on the course (such as achieving your qualifications with a certain grade). We will specify these conditions when making you an offer. When you achieve these grades your place will then be confirmed.
- **Unconditional Offer** You already meet the entry requirements for the course (i.e. you have achieved the grades already) and we are happy to offer you a place without conditions.

- **Decline** This means that unfortunately, we are not able to offer you a place at this time. We will advise you why you were unsuccessful on this occasion and we can give you advice on alternative courses for progression.
- If you have already undertaken some HE study, please read the APL guidance on page 93.

Partner Courses

Applications for Eastern School of Performing Arts (ESPA) should be made via UCAS using the code **1A69**.

Applicant Day

This invitation only event is available to students who are holding a Conditional Offer or Unconditional Offer. It will give you the opportunity to meet other students, academic staff and participate in subject sessions to help prepare you before starting. If you are still deciding on where to study then this day can be a great chance to see if studying with us is right for you.

Advice Sessions and Open Events

If you would like help with your application, or have any questions, then book onto one of our regular 'Virtual Advice Sessions' where you can speak to a member of staff. During our Open Events we run a series of talks on a variety of topics, including applications and student finance. For dates and times of the latest Advice Sessions and Open Events, visit www.ucp.ac.uk/events.

Terms and Conditions

Our Terms and Conditions are available at www.ucp.ac.uk/supporting-you/ucp-policies and it is important you read this information prior to applying.

ENTRY

REQUIREMENTS

Entry Requirements

Whilst many students come straight from sixth form or college with traditional qualifications, we also welcome applications from mature students with other qualifications or relevant experience. The entry requirements for all courses are listed on each course page in this prospectus.

Mature Students

Mature students or students who do not satisfy the published entry criteria should call the Admissions Office on 01733 214466, or email admissions@ucp.ac.uk to discuss equivalent qualifications or relevant work experience. It should be noted that admission to some courses is strictly prescribed; our Counselling courses are an example of this.

UCAS Tariff

If the course requires a specified number of UCAS points you can use the tables opposite as a guide. The tariff points for qualifications can be added and combined together (e.g. A Levels plus BTECs). The UCAS points for A Level General Studies and the EPQ (Extended Project Qualification) are accepted when combined with other full qualifications.

We accept a wide range of qualifications such as A Levels, Technical Qualifications, BTEC, Cambridge Technicals, International Baccalaureate (IB), NVQ Level 3, Access to Higher Education and Scottish Advanced Highers. To find out more about UCAS tariff points and how they work, visit www.ucas.com/ucas/tariff-calculator.

We highly recommend that you confirm your achieved (or predicted) tariff points directly through the UCAS Tariff Calculator.

A Levels

You must have grades for at least two A Levels. Note that some courses may require you to have a related subject at A Level to apply for the course.

Qualifications

Note that some courses may require you to have a related subject at BTEC to apply for the course.

Access to HE

We accept Access to HE qualifications for all of our undergraduate courses as we recognise that this course prepares you for studying a degree. For more information about which pathways we offer, please see page 76. It should be noted that admission to some courses is strictly prescribed; our Counselling courses are an example of this.

GCSEs

You must have GCSE English Language and Mathematics (or equivalent) at a minimum of grade C or grade 4. Some courses will also require you to have GCSE Science.

English Language

If English is not your first language then you must achieve a recognised Level 2 English language qualification or you will require an IELTS score of 6.0 (with 5.5 minimum in each skill).

Exemptions Based on Accreditation of Prior Learning (APL)

We offer students flexibility in their studies by recognising learning they may have completed elsewhere before they apply. The Accreditation of Prior Learning process ensures that we can take this into account when determining the modules you must study. It is important that you identify any relevant prior learning when you apply. If your previous study specifically relates to modules on the course you wish to undertake, we may approve a reduced programme of study, thus shortening the time it takes to obtain your award. Where this relates to learning completed through an earlier course of study, this is called Prior Certificated Learning, and where learning has been achieved through relevant work or experience, this is referred to as Prior Experiential Learning. Claims must be approved before you commence a course. APL is about credit transfer, not the transfer of grades.

Accreditation of Prior Certificated Learning (APCL) For Entry

APCL relates to learning completed through an earlier course of study. If you have previously completed a course which is relevant to your proposed course you should make this clear when you apply. For this to be eligible for consideration you must be able to provide certification, which shows your success in a final assessment for that course.

Learning must be completed in the last five years or further evidence of updating will be required. Simple participation in a course or an attendance certificate is not sufficient.

Exemptions Based on Accreditation of Prior Experiential Certificated Learning (APEL)

It is important to understand that the APEL process does not award academic credit for experience alone, but for learning which can be shown to have been achieved through that experience. Students are required to prepare an individual case for the credit arising from their learning experiences.

This normally means that a student receives support in the preparation of a portfolio, which evidences their claimed exemptions for entry. This portfolio of evidence is then submitted for assessment and the possible award of academic credit. Alternative methods of assessment of evidence may be available but need to be discussed with the Admissions Office or Course Leader.

Overseas Qualifications

We can accept a wide range of overseas qualifications and recommend that you submit these qualifications to UK ENIC www.ecctis.com for a comparison report. For help and advice about conversion call the Admissions Office on 01733 214466 or admissions@ucp.ac.uk.

UCAS TARIFF POINTS

A Levels		AS levels	
A*	56		
A	48	A	20
B	40	B	16
C	32	C	12

Key

D/D* = Distinction/Distinction*
M = Merit
P = Pass

If you have any questions about entry requirements contact the Admissions Office on 01733 214466 or email admissions@ucp.ac.uk.

BTEC National Extended Diploma		BTEC National Diploma		BTEC National Extended Certificate	
D*D*D*	168	D*D*	112	D*	56
D*D*D	160	D*D	104	D	48
D*DD	152	DD	96	M	32
DDD	144	DM	80	P	16
DDM	128	MM	64		
DMM	112	MP	48		
MMM	96	PP	32		
MMP	80				
MPP	64				
PPP	48				
P	16				

FEES AND FUNDING



The costs of studying can be an important factor in choosing where to study. We offer lower tuition fees compared to many other universities and bursary schemes for undergraduate students.

Tuition Fees

The tuition fees for UK full-time undergraduate students starting in the 2025/26 academic year will be £8,250 per year. This is lower compared to many other universities. Fees for part-time study are pro-rata depending on the number of credits you are studying (i.e. 90 credits per year is 75% of the tuition fee). A HNC/HND will be £7,500 per year full-time and £3,750 per year part-time.

- All tuition fees may be subject to an annual inflationary increase.
- Please note that if you fail a unit, you may incur re-sit costs.
- There may be additional costs for the course which are not covered by your tuition fee (e.g. course trips, travel costs and sports kit).

- For more details you can refer to the course information section on our website.

Paying for Your Degree

You can apply for student finance to cover your tuition fees and living expenses. Student finance is broken into two separate loans; a tuition fee loan and a maintenance loan.

If you do not wish to take a tuition fee loan and prefer to pay fees upfront or you are being sponsored by an employer, please email studentfinance@ucp.ac.uk for payment details. Fees and payment terms and conditions are available on our website.

Student Finance Tuition Fee

You can apply for a tuition fee loan to cover the full cost of the tuition fees. Tuition fees are not means-tested so your household income does not affect your entitlement and you will be entitled to the full amount. The Student Loans Company pay the fees directly to University Centre Peterborough and you do not need to pay any fees upfront.

Student Finance Maintenance Loan

Full-time and part-time students can apply for a maintenance loan to help with living costs such as accommodation, food, bills, transport, study resources and books. The Student Loans Company will pay the maintenance loan directly into your bank account over three instalments.

The amount of maintenance loan you are entitled to will depend on your personal circumstances, including your household income, your age, what year of study you are in, and whether you are living at home or away from home. These levels are determined by the government and not set by UCP.

The figures displayed are from academic year 2023/2024 and are to give you an indication of what you could get for a maintenance loan. There is also a calculator on the student finance website: www.gov.uk/student-finance-calculator.

Household income	Living away from home	Living at home
up to £25,000	£9,978/yr	£8,400/yr
£30,000	£9,265/yr	£7,694/yr
£35,000	£8,552/yr	£6,988/yr
£40,000	£7,839/yr	£6,282/yr
£42,875	£7,429/yr	£5,876/yr
£45,000	£7,125/yr	£5,576/yr

Further Information

For more information about tuition fees and maintenance loans including how much you may be entitled to, visit www.gov.uk/student-finance. You can easily check what you are entitled to without starting an application. For more help and FAQs please see www.studentfinance.campaign.gov.uk

Applying for Student Finance

The easiest way to apply for student finance is online at www.gov.uk/student-finance. You can start your application from the end of February 2025. It can take a minimum of six to eight weeks to process your application, so you should apply for student finance as soon as possible. When you apply for student finance funding, please use institution code **FFCH** and institution name University Centre Peterborough.





Repaying Your Student Loan

Both your tuition fee loan and your maintenance loan are combined together to make your student loan. As your course started on or after 1 August 2024 you will be on Plan 5 for repayments. The earliest you will start repaying your loan is the April after you leave your course. Once it is after this point you will only then make repayments when your income is above £25,000 a year, or £480 a week, or £2,083 a month (before tax and other deductions). When you start repaying, this is done automatically on your payslip, in the same way that tax is deducted from your earnings. The amount you repay is 9% of your income which is over the threshold. For example, if you have an income of £30,000 a year, which is £2,500 a month:

This is your income minus the threshold:
 $£2,500 - £2,083 = £417$.

9% of your income over the threshold:
 $9\% \text{ of } £417 = £37.53$.

So, you would repay £37.53 a month if you were earning £30,000.

What happens if you don't repay it? Nothing. Your loan will be written off 40 years after the April you were first due to repay. The loan also will not affect your credit score at all.

EU Students

If you are from an EU country you may be able to get a tuition fee loan and help with living costs. EU students will have continued access to student finance for the duration of the course if they start in the 2025/26 academic year.

EU students must provide evidence of their Settled or Pre-Settled status when applying for a course. For the latest information, we advise EU students to check gov.uk/student-finance/eu-students or you can speak to our Student Support team for guidance. University Centre Peterborough does not accept international students.

Disabled Students Allowance

On your UCAS application, when entering your personal details, you will be asked if you have a disability/special need (which could include a long-term health condition, mental health condition or specific learning difficulty). Please ensure you state this on your application as it will not affect your application to study with us, but ensures that we put into place the support you require and there may be funding available to ensure this happens.

UCP Low-Income Bursary

If you are from a low income household (under £30,000 per year) and studying a full-time face-to-face undergraduate course with an annual course fee of £7,500 you will receive a £500 cash bursary at the beginning of the second semester. This bursary is available to students studying at University Centre Peterborough at either our Peterborough or Stamford campus and also our partner ESPA. The bursary for partners commenced in September 2020. In order to be assessed as eligible for the low income bursary students must meet the following criteria:

- University Centre Peterborough student.
- Paying their tuition fees through Student Finance England.
- Have an assessed household income of under £30,000 from Student Finance England and be in receipt of maintenance loan from Student Finance England.
- Fully enrolled and in attendance at the time of each payment.
- Have validated bank details registered with Student Finance England.
- As part of their student finance application they have agreed for information to be shared with UCP so that the bursary can be approved.

Care Leaver Bursary

The Care Leaver Bursary is to enable students who live in, or have lived in, care to pursue their studies at UCP. If you are a care leaver and studying a full-time undergraduate course, you will receive a £500 cash bursary for each academic year. The Care Leaver Bursary does not need to be repaid after graduating and is not added to your student loan. There is no separate application to be assessed if eligible for the Care Leaver Bursary. All students will be considered for the bursary based on the information supplied in their course application. Applicants will additionally be required to submit evidence of care leaver status.

Malcolm Bradbury Trust Scholarship

A bursary in memory of the late author, screenwriter and academic, the Malcolm Bradbury Trust Scholarship is a registered charity seeking to advance and promote the literary arts through educational initiatives. The Trust aims to support and fund educational opportunities for new writers and creatives, meanwhile expanding the reach of their support to a diverse cohort of students and young people across the UK. This funding of up to £7,500 will support a creative writing undergraduate each year, and they will undertake extra-curricular work to promote literacy and literary engagement in Peterborough.

Help for Parents

The Childcare Grant and Parents' Learning Allowance can help parents to balance the cost of childcare and study. Students with an adult who depends on them financially may also be eligible for an Adult Dependents' Grant. Our Student Support team can help advise you on an individual basis so you receive what you are entitled to.

KEEP IN TOUCH



Follow our socials to keep up with everything going on at UCP. Have a question for us? Give us a call on 01733 214466, send us an email to enquiries@ucp.ac.uk or visit our website to Live Chat with our friendly team.



Open Events

Our Open Events are a great way to get a snapshot of what university life is like here at UCP and provide you with all the information you need to help you make the right decision for your future.

On the day, you will be able to have a look around and speak to staff about applications and courses. We will have various displays and demonstrations for our courses and current students will also be on hand to tell you about studying at UCP.

In addition to our course advice, we will also have financial talks, information on our clubs, societies and student accommodation.

Register your place at www.ucp.ac.uk.

Explore Our Campus Any Time!

Can't make it to an Open Event or missed something you wanted to see? Contact us to book a tour any time Monday to Friday, or check out our virtual tour at any time on our website. Visit www.ucp.ac.uk to explore our amazing facilities.



Open Events 2024/25

24
OCT
2024

19
NOV
2024

15
MAR
2025



University Centre **Peterborough**

www.ucp.ac.uk
hello@ucp.ac.uk
01733 214466



Peterborough Campus

Park Crescent Campus
Peterborough
Cambridgeshire
PE1 4DZ

Stamford Campus

Drift Road
Stamford
PE9 1XA



Teaching
Excellence
Framework



Inspire
Education Group

Every effort has been made to ensure the information contained here is correct at the time of print but could be subject to change at any time. The most up to date information can be found on our website or at Student Finance England. This prospectus is available in alternative formats upon request, including large-format, audio and Braille. Whilst rare, if we are unable to progress a course for any reason e.g. insufficient demand, we will work with applicants to find an alternative solution.